

CATALOGUE

DATE : 16-07-2023

# VIGOR<sup>®</sup>

Complete Plumbing Solution



# No.1

## COMPLETE PLUMBING SOLUTION

VIGOR PLAST INDIA PVT. LTD.



CPVC



uPVC



SWR RING-FIT



SWR SEL-FIT



PVC SEL-FIT



## INTRODUCTION

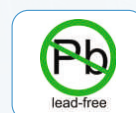
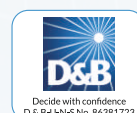
**VIGOR PLAST INDIA PVT. LTD.** Is a **DHANANJAY GROUP** of Companies based at Jamnagar, Gujarat. Company is in the Pvc sector since **2012** and is growing exponentially in this field. We are one of the fastest growing organization in the region.

**Vigor Plast India Pvt. Ltd.** is Overwhelmed In The Market for offering qualitative products at best competitive prices. The range of products varies from 15 mm to 100 mm in **uPVC PLUMBING PIPES & FITTINGS AND CPVC PLUMBING PIPES & FITTINGS**. The range of **PVC PIPES & FITTINGS** varies from 20 mm to 160 mm while in **SWR PIPE & FITTINGS** range varies from 75 mm to 160 mm. To maintain the quality of product we have well equipped laboratory. Apart from that our quality executives regularly checks from initial process of deploying Raw material to final stage of dispatching finished products. We are having **BIS (BUREAU OF INDIAN STANDARD)** Certification for **CPVC, SWR & PVC PIPES AND FITTINGS**. Moreover company is also certified by **ISO 9001:2015** For Quality Management System.

**Our Mission** is to offer superior products while keeping an eye on market trends to gain utmost customer satisfaction & distinguish market position in the field.

### Our Strength:

- STATE OF ART MANUFACTURING FACILITY
- WELL CONNECTED WITH ALL THE MEANS OF TRANSPORTATION (**AIR , SEA & ROAD** )
- A WELL EQUIPPED & ADVANCED LABORATORY TO MAINTAIN THE QUALITY OF PRODUCTS.
- PROPER SPACE FOR STORING RAW MATERIALS AND FINISHED STOCKS.
- A WELL TRAINED AND SKILLED MANPOWER RESOURCE.
- A COMPLETE RANGE OF PRODUCTS.



# CPVC ISI PLUMBING SYSTEM

Technical Specification (CPVC PIPE AS PER IS : 15778)

Nominal Bore	Nominal Size	Nominal Outside Diameter	SDR - 11 Wall Thickness			Working Pressure at		SDR - 13.5 Wall Thickness			Working Pressure at		
			Min.	Max.	Weight	20°C (Cold)	90°C (Hot)	Min.	Max.	Weight	20°C (Cold)	90°C (Hot)	
(inch)	(mm)	(mm)	(mm)	(mm)	3 MTR (Kg.)	Kg/Cm <sup>2</sup>		(mm)	(mm)	3 MTR (Kg.)	Kg/Cm <sup>2</sup>		
1/2	15	15.90	1.75	1.90	0.420	28.10	7.00	1.45	1.60	0.370	21.80	5.50	
3/4	20	22.30	2.05	2.20	0.630	28.10	7.00	1.75	1.90	0.540	21.80	5.50	
1	25	28.65	2.65	2.80	1.010	28.10	7.00	2.15	2.30	0.850	21.80	5.50	
1.1/4	32	34.90	3.25	3.40	1.510	28.10	7.00	2.65	2.80	1.240	21.80	5.50	
1.1/2	40	41.35	3.85	4.00	2.100	28.10	7.00	3.15	3.30	1.750	21.80	5.50	
2	50	54.00	4.95	5.10	3.600	28.10	7.00	4.05	4.20	3.000	21.80	5.50	
Inch	MM	CPVC Pipes SCH - 80						CPVC Pipes SCH - 40					
2.1/2	65	73.30	7.01	7.84	7.200	28.10	7.00	5.20	5.60	5.200	21.80	5.50	
3	80	89.00	7.62	7.90	9.500	28.10	7.00	5.50	5.66	6.700	21.80	5.50	
4	100	114.40	8.56	9.02	13.700	28.10	7.00	6.02	6.70	9.700	21.80	5.50	

# ASTM uPVC PLUMBING SYSTEM

Technical Specification

Nominal Bore	Nominal Size	Outside Diameter	SCH - 40				SCH - 80			
			Wall Thickness		Working Pressure	Weight	Wall Thickness		Working Pressure	Weight
(inch)	(mm)	(mm)	Minimum (mm)	Maximum (mm)	Kg/Cm <sup>2</sup>	Kg.	Minimum (mm)	Maximum (mm)	Kg/Cm <sup>2</sup>	Kg.
1/2	15	21.35	2.30	2.60	41.40	0.770	3.05	3.35	58.60	0.920
3/4	20	26.70	2.35	2.65	33.10	0.980	3.20	3.50	47.60	1.280
1	25	33.35	3.00	3.30	31.00	1.490	3.60	3.90	43.40	1.790
1.1/4	32	42.20	3.10	3.40	25.50	2.000	4.10	4.40	35.90	2.550
1.1/2	40	48.30	3.15	3.45	22.80	2.410	4.20	4.50	32.40	3.060
2	50	60.25	3.20	3.50	19.30	3.070	4.40	4.70	27.60	4.070
2.1/2	65	73.20	4.65	4.95	21.10	4.880	6.50	6.80	29.54	6.780
3	80	89.10	5.00	5.30	18.28	6.290	7.10	7.40	26.02	8.590
4	100	114.50	5.50	5.80	15.47	9.200	8.10	8.40	22.50	12.800

# SWR RING TYPE & PASTING TYPE

Technical Specification (SWR RING - FIT PIPE AS PER IS : 13592)

Pipe Size (mm)	Socket Length	Mean Outside Diameter (mm)		Wall Thickness				Fitting Size (mm)	Wall Thickness at Plain End (mm) Minimum	Wall Thickness at Socket (mm) Maximum e2	Wall Thickness at Socket (mm) Minimum e3	Max. Length of Beading & Neck A	Min. Neck Length of Socket B	Min. Length of Beading B	Inside Diameter of Socket at Midpoint (mm)		Outside Diameter of Spigot Portion (mm)	
				TYPE " A "		Weight									Minimum	Maximum	Minimum	Maximum
		Minimum	Maximum	Minimum	Maximum	10 Feet	20 Feet											
40	26.00	40.00	40.30	1.80	2.20	1.100	2.200											
50	30.00	50.00	50.30	1.80	2.20	1.400	2.800	75	3.20	2.90	2.40	20	5	25	75.10	76.20	75.00	75.30
63	36.00	63.00	63.30	1.80	2.20	1.600	3.200	90	3.20	2.90	2.40	23	5	28	90.10	91.20	90.00	90.30
75	40.00	75.00	75.30	1.80	2.20	1.750	3.500	110	3.20	2.90	2.40	26	6	32	110.10	111.30	110.00	110.40
90	46.00	90.00	90.30	1.90	2.30	2.450	4.900	160	3.50	2.90	2.90	29	6	32	160.10	160.30	160.00	160.40
110	48.00	110.00	110.40	2.20	2.70	3.350	6.700											
160	58.00	160.00	160.50	3.20	3.80	7.100	14.200											



# PVC PIPING SYSTEM

## Technical Specification

Nominal Outside Diameter Nominal Size	Socket Length	Mean outside Diameter		Wall thickness											
				2.5 Kg/Cm <sup>2</sup>			Class 2 / 0.40 Mpa / 4.0 Kg. / Cm <sup>2</sup>			Class 3 / 0.60 Mpa / 6.0 Kg. / Cm <sup>2</sup>			Class 5 / 1.00 Mpa / 10.0 Kg. / Cm <sup>2</sup>		
		Min.	Max.	Min.	Max.	Weight	Min.	Max.	Weight	Min.	Max.	Weight	Min.	Max.	Weight
20	16.00	20.00	20.00	-	-	-	-	-	-	-	-	-	1.10	1.50	1.100 (40 PCS)
25	19.00	25.00	25.30	-	-	-	-	-	-	-	-	-	1.40	1.80	1.400 (30 PCS)
32	22.00	32.00	32.30	-	-	-	-	-	-	-	-	-	1.80	2.20	2.000 (20 PCS)
40	26.00	40.00	40.30	-	-	-	-	-	-	1.40	1.80	1.600	-	-	-
50	31.00	50.00	50.30	-	-	-	-	-	-	1.70	2.10	2.400	-	-	-
63	38.00	63.00	63.30	-	-	-	1.50	1.90	2.700	2.20	2.70	3.700	-	-	-
75	44.00	75.00	75.30	-	-	-	1.80	2.20	3.600	2.60	3.10	5.300	-	-	-
90	51.00	90.00	90.30	1.30	1.70	3.500	2.10	2.60	5.300	3.10	3.70	7.600	-	-	-
110	61.00	110.00	110.40	1.60	2.00	5.300	2.50	3.00	7.800	3.70	4.30	11.000	-	-	-
140	76.00	140.00	140.50	2.00	2.40	7.900	3.20	3.80	12.600	4.80	5.50	17.500	-	-	-
160	86.00	160.00	160.50	2.30	2.80	10.800	3.70	4.30	16.800	5.40	6.20	23.400	-	-	-
180	96.00	180.00	180.60	2.60	3.10	13.500	4.20	4.90	20.500	6.10	7.10	29.500	-	-	-
200	106.00	200.00	200.60	2.90	3.40	17.000	4.60	5.30	25.800	6.80	7.90	38.100	-	-	-

## Field of Applications

VIGOR PLAST INDIA PVT. LTD. does not favor deflagration thus it is ideally used for Housing, Industrial, commercial & public sector developments. Our plumbing Solutions are having varied properties like Lead Free, cost effective, easy Installation, No corrosion, leakage proof , UV & Fire resistant CPVC Pipes. Drainage piping solution have smooth interior so there is no incrustations.



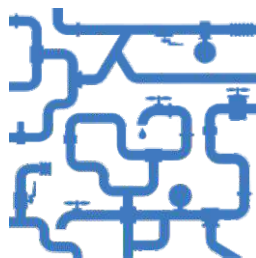
Cold & hot Water plumbing for Buildings



Industrial application for Extrusion, plating & tanning plants



Swimming pools



Water treatment plants



Drainage system for households

# VIGOR<sup>®</sup>

Complete Plumbing Solution



# CPVC

## PLUMBING PIPE FITTINGS

For **Hot** & **Cold** Water

Product Features



HIGH STRENGTH & DURABILITY



ULTRA VIOLET RESISTANT



HOT & COLD WATER PLUMBING



RESIDENTIAL PURPOSES



IDEAL FOR DRINKING WATER



INDUSTRIAL USAGE



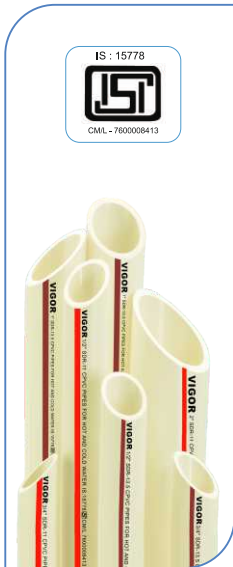
MAINTENANCE FREE





# CPVC Plumbing Pipes & Fittings

Manufacturer of: CPVC Fitting ( 1/2" to 2" ) ASTM D-2846 SDR-11 & ( 2.1/2" to 4" )  
 SCH-40 ASTM-F-438 SCH-80 ASTM-F-439  
 CPVC Pipes 1/2" to 2" ASTM D-2846 SDR-11 / SDR-13.5 ( 2.1/2" to 4" ) ASTM-F-441



VIGOR CPVC PIPES (SDR-11 CLASS-1)				
SIZE (IN)	SIZE (MM)	3 - MTR PACK	5 - MTR PACK	RATE PER MTR
1/2"	15	50	50	80.00
3/4"	20	50	50	120.00
1"	25	30	30	193.00
1.1/4"	32	20	15	289.00
1.1/2"	40	15	15	402.00
2"	50	10	8	687.00

VIGOR CPVC PIPES (SDR-13.5 CLASS-2)				
SIZE (IN)	SIZE (MM)	3 - MTR PACK	5 - MTR PACK	RATE PER MTR
1/2"	15	50	50	70.00
3/4"	20	50	50	102.00
1"	25	30	30	161.00
1.1/4"	32	20	15	235.00
1.1/2"	40	15	15	333.00
2"	50	10	8	569.00

VIGOR CPVC PIPES (SCH-40)				
SIZE (IN)	SIZE (MM)	3 - MTR PACK	5 - MTR PACK	RATE PER MTR
2.1/2"	65	5	5	1000.00
3"	80	4	4	1294.00
4"	100	2	2	1868.00

VIGOR CPVC PIPES (SCH-80)				
SIZE (IN)	SIZE (MM)	3 - MTR PACK	5 - MTR PACK	RATE PER MTR
2.1/2"	65	5	5	1373.00
3"	80	4	4	1824.00
4"	100	2	2	2669.00



ELBOW 90° (SDR-11)				
SIZE		PACKING		RATE
INCH	MM	BAG	CARTOON	
1/2"	15	60 x 8	480	11.50
3/4"	20	70 x 3	210	18.00
1"	25	55 x 4	220	30.00
1.1/4"	32	15 x 8	120	68.00
1.1/2"	40	10 x 8	80	113.00
2"	50	11 x 3	33	253.00



TEE (SDR-11)				
SIZE		PACKING		RATE
INCH	MM	BAG	CARTOON	
1/2"	15	50 x 6	300	14.00
3/4"	20	50 x 6	300	24.00
1"	25	35 x 4	140	42.00
1.1/4"	32	11 x 8	88	91.00
1.1/2"	40	7 x 8	56	147.00
2"	50	6 x 4	24	330.00

ELBOW 90° (SCH-40)				
SIZE		PACKING		RATE
INCH	MM	BAG	CARTOON	
2.1/2"	65	4 x 5	20	370.00
3"	80	4 x 3	12	602.00
4"	100	-	14	1100.00

TEE (SCH-40)				
SIZE		PACKING		RATE
INCH	MM	BAG	CARTOON	
2.1/2"	65	4 x 3	12	510.00
3"	80	3 x 3	09	750.00
4"	100	-	10	1420.00



M.T.A. THREAD (SDR-11)				
SIZE		PACKING		RATE
INCH	MM	BAG	CARTOON	
1/2"	15	100 x 6	600	12.00
3/4"	20	45 x 6	270	17.00
1"	25	45 x 8	360	27.00
1.1/4"	32	33 x 6	198	51.00
1.1/2"	40	16 x 8	128	75.00
2"	50	9 x 8	72	150.00
3/4" x 1/2"	20 x 15	45 x 6	270	16.00



F.T.A. THREAD (SDR-11)				
SIZE		PACKING		RATE
INCH	MM	BAG	CARTOON	
1/2"	15	75 x 6	450	13.00
3/4"	20	30 x 8	240	22.00
1"	25	38 x 8	304	35.00
1.1/4"	32	21 x 8	168	57.00
1.1/2"	40	15 x 8	120	85.00
2"	50	15 x 4	60	160.00
3/4" x 1/2"	20 x 15	40 x 6	240	21.00

M.T.A. THREAD (SCH-80)				
SIZE		PACKING		RATE
INCH	MM	BAG	CARTOON	
2.1/2"	65	-	22	300.00
3"	80	-	16	500.00
4"	100	-	8	800.00

F.T.A. THREAD (SCH-80)				
SIZE		PACKING		RATE
INCH	MM	BAG	CARTOON	
2.1/2"	65	-	22	305.00
3"	80	-	24	485.00
4"	100	-	18	898.00



# CPVC Plumbing Pipes & Fittings

Manufacturer of: CPVC Fitting ( 1/2" to 2") ASTM D-2846 SDR-11 & (2.1/2" to 4")  
 SCH-40 ASTM-F-438 SCH-80 ASTM-F-439  
 CPVC Pipes 1/2" to 2" ASTM D-2846 SDR-11 / SDR-13.5 (2.1/2" to 4") ASTM-F-441



ELBOW 45° (SDR-11)				
SIZE		PACKING		RATE
INCH	MM	BAG	CARTOON	
1/2"	15	45 x 12	540	16.60
3/4"	20	35 x 6	210	23.00
1"	25	15 x 8	120	40.00
1.1/4"	32	9 x 8	72	62.00
1.1/2"	40	11 x 4	44	107.00
2"	50	5 x 4	20	211.00

ELBOW 45° (SCH - 40)				
SIZE		PACKING		RATE
INCH	MM	BAG	CARTOON	
2.1/2"	65	4 x 6	24	320.00
3"	80	5 x 3	15	460.00
4"	100	-	16	850.00



SOCKET TANK NIPPLE (SDR-11)				
SIZE		PACKING		RATE
INCH	MM	BAG	CARTOON	
1/2"	15			
3/4"	20	30 x 8	240	58.00
1"	25	37 x 4	148	82.00
1.1/4"	32	11 x 8	88	150.00
1.1/2"	40	8 x 8	64	182.00
2"	50	5 x 8	40	260.00

SOCKET TANK NIPPLE (SCH-40)				
SIZE		PACKING		RATE
INCH	MM	BAG	CARTOON	
2.1/2"	65	-	09	445.00
3"	80	-	09	650.00
4"	100	-	06	900.00



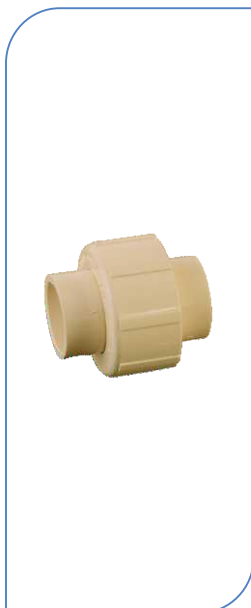
COUPLER (SDR-11)				
SIZE		PACKING		RATE
INCH	MM	BAG	CARTOON	
1/2"	15	72 x 10	720	8.00
3/4"	20	40 x 8	320	13.40
1"	25	75 x 4	300	23.40
1.1/4"	32	25 x 8	200	40.00
1.1/2"	40	15 x 8	120	70.00
2"	50	10 x 6	60	146.00

COUPLER (SCH-80)				
SIZE		PACKING		RATE
INCH	MM	BAG	CARTOON	
2.1/2"	65	9 x 4	36	247.00
3"	80	9 x 3	27	350.00
4"	100	-	10	670.00



END CAP (SDR-11)				
SIZE		PACKING		RATE
INCH	MM	BAG	CARTOON	
1/2"	15	50 x 10	500	10.00
3/4"	20	65 x 8	520	13.00
1"	25	35 x 8	280	21.00
1.1/4"	32	20 x 8	160	35.00
1.1/2"	40	25 x 8	200	58.00
2"	50	13 x 8	104	120.00

END CAP (SCH-80)				
SIZE		PACKING		RATE
INCH	MM	BAG	CARTOON	
2.1/2"	65	12 X 2	24	215.00
3"	80	14 X 3	42	310.00
4"	100	-	10	610.00



UNION (SDR-11)				
SIZE		PACKING		RATE
INCH	MM	BAG	CARTOON	
1/2"	15	25 x 8	200	49.00
3/4"	20	30 x 4	120	53.00
1"	25	37 x 4	148	95.00
1.1/4"	32	11 x 8	88	160.00
1.1/2"	40	9 x 8	72	207.00
2"	50	5 x 6	30	421.00

UNION (SCH-80)				
SIZE		PACKING		RATE
INCH	MM	BAG	CARTOON	
2.1/2"	65	-	07	730.00
3"	80	-	05	1020.00
4"	100	-	04	1200.00



REDUCER TEE (SDR-11)				
SIZE		PACKING		RATE
INCH	MM	BAG	CARTOON	
3/4" x 1/2"	20 x 15	25 x 6	150	25.00
1" x 3/4"	25 x 20	25 x 8	200	44.00
1.1/4" x 3/4"	32 x 20	13 x 8	104	74.00
1.1/4" x 1"	32 x 25	13 x 8	104	79.00
1.1/2" x 3/4"	40 x 20	9 x 8	72	118.00
1.1/2" x 1"	40 x 25	8 x 8	64	124.00
1.1/2" x 1.1/4"	40 x 32	10 x 8	60	129.00
2" x 3/4"	50 x 20	2 x 8	16	250.00
2" x 1"	50 x 25	2 x 8	16	220.00
2" x 1.1/4"	50 x 32	2 x 8	16	255.00
2" x 1.1/2"	50 x 40	2 x 8	16	265.00

# CPVC Plumbing Pipes & Fittings

Manufacturer of: CPVC Fitting (1/2" to 2") ASTM D-2846 SDR-11 & (2.1/2" to 4")  
SCH-40 ASTM-F-438 SCH-80 ASTM-F-439  
CPVC Pipes 1/2" to 2" ASTM D-2846 SDR-11 / SDR-13.5 (2.1/2" to 4") ASTM-F-441



BRASS ELBOW (SDR-11)				
SIZE		PACKING		RATE
INCH	MM	BAG	CARTOON	
1/2"	15	40 x 6	240	68.00
3/4"	20	15 x 8	120	110.00
1"	25	12 x 8	72	155.00
1.1/4"	32	-	-	-
3/4" x 1/2"	20 x 15	20 x 8	160	71.00
1" x 1/2"	25 x 15	16 x 6	96	85.00
1" x 3/4"	25 x 20	10 x 8	80	124.00
1.1/4" x 1/2"	32 x 15	8 x 8	64	141.00
1.1/4" x 3/4"	32 x 20	8 x 8	64	166.00
1.1/2" x 1/2"	40 x 15	7 x 6	42	170.00
1.1/2" x 3/4"	40 x 20	6 x 6	36	225.00
2" x 1/2"	50 x 15	3 x 8	24	285.00
2" x 3/4"	50 x 20	3 x 8	24	330.00



BRASS TEE (SDR-11)				
SIZE		PACKING		RATE
INCH	MM	BAG	CARTOON	
1/2"	15	30 x 6	180	73.00
3/4"	20	15 x 6	90	115.00
1"	25	9 x 6	54	174.00
1.1/4"	32	-	-	-
3/4" x 1/2"	20 x 15	14 x 8	112	84.00
1" x 1/2"	25 x 15	8 x 8	64	95.00
1" x 3/4"	25 x 20	11 x 6	66	144.00
1.1/4" x 1/2"	32 x 15	6 x 8	48	141.00
1.1/4" x 3/4"	32 x 20	5 x 8	40	191.00
1.1/2" x 1/2"	40 x 15	3 x 10	30	191.00
1.1/2" x 3/4"	40 x 20	3 x 10	30	236.00
2" x 1/2"	50 x 15	2 x 8	16	320.00
2" x 3/4"	50 x 20	2 x 8	16	365.00



BRASS M.T.A. (ROUND) (SDR-11)				
SIZE		PACKING		RATE
INCH	MM	BAG	CARTOON	
1/2"	15	32 x 6	192	104.00
3/4"	20	17 x 8	136	135.00
1"	25	10 x 8	80	225.00
1.1/4"	32	5 x 7	35	421.00
1.1/2"	40	5 x 6	30	538.00
2"	50	2 x 12	24	684.00
3/4" x 1/2"	20 x 15	25 x 8	200	101.00
1" x 1/2"	25 x 15	18 x 8	144	118.00
1" x 3/4"	25 x 20	15 x 8	120	146.00



BRASS F.T.A. (ROUND) (SDR-11)				
SIZE		PACKING		RATE
INCH	MM	BAG	CARTOON	
1/2"	15	42 x 6	252	65.00
3/4"	20	25 x 6	150	106.00
1"	25	12 x 8	96	146.00
1.1/4"	32	6 x 10	60	253.00
1.1/2"	40	4 x 10	40	337.00
2"	50	4 x 8	32	438.00
3/4" x 1/2"	20 x 15	28 x 8	224	63.00
1" x 1/2"	25 x 15	20 x 8	160	85.00
1" x 3/4"	25 x 20	15 x 8	120	122.00

BRASS M.T.A. (ROUND) (SCH-80)				
SIZE		PACKING		RATE
INCH	MM	BAG	CARTOON	
2.1/2"	65	-	09	1737.00
3"	80	-	08	2130.00
4"	100	-	06	2500.00

BRASS F.T.A. (ROUND) (SCH-80)				
SIZE		PACKING		RATE
INCH	MM	BAG	CARTOON	
2.1/2"	65	-	15	1211.00
3"	80	-	09	1513.00
4"	100	-	08	1800.00



BRASS M.T.A. (Hexagon) (SDR-11)				
SIZE		PACKING		RATE
INCH	MM	BAG	CARTOON	
1/2"	15	-	-	-
3/4"	20	22 x 8	176	180.00
1"	25	13 x 6	78	290.00
1.1/4"	32	6 x 10	60	600.00
1.1/2"	40	4 x 10	40	914.00
2"	50	2 x 12	24	1300.00
3/4" x 1/2"	20 x 15	24 x 8	192	137.00
1" x 1/2"	25 x 15			
1" x 3/4"	25 x 20			



BRASS F.T.A. (Hexagon) (SDR-11)				
SIZE		PACKING		RATE
INCH	MM	BAG	CARTOON	
1/2"	15	-	-	-
3/4"	20	20 x 8	160	182.00
1"	25	11 x 6	66	301.00
1.1/4"	32	6 x 10	60	600.00
1.1/2"	40	4 x 10	40	730.00
2"	50	2 x 12	24	1150.00
3/4" x 1/2"	20 x 15	20 x 8	160	157.00
1" x 1/2"	25 x 15			
1" x 3/4"	25 x 20			





# CPVC Plumbing Pipes & Fittings

Manufacturer of: CPVC Fitting ( 1/2" to 2" ) ASTM D-2846 SDR-11 & ( 2.1/2" to 4" )  
 SCH-40 ASTM-F-438 SCH-80 ASTM-F-439  
 CPVC Pipes 1/2" to 2" ASTM D-2846 SDR-11 / SDR-13.5 ( 2.1/2" to 4" ) ASTM-F-441



## BRASS ELBOW MABT (SDR-11)

SIZE		PACKING		RATE
INCH	MM	BAG	CARTOON	
3/4" x 1/2"	20 x 15	18 x 8	144	120.00
1" x 1/2"	25 x 15	14 x 8	112	140.00



## BRASS TEE MABT (SDR-11)

SIZE		PACKING		RATE
INCH	MM	BAG	CARTOON	
3/4" x 1/2"	20 x 15	12 x 8	96	133.00
1" x 1/2"	25 x 15	6 x 8	48	146.00



## CONCEALED VALVE (TRIANGLE)

INCH	MM	CARTOON	RATE
3/4"	20	15	900.00
1"	25	15	940.00
1.1/4"	32	15	1000.00



## CONCEALED VALVE (FUSION)

INCH	MM	CARTOON	RATE
3/4"	20	15	900.00
1"	25	15	940.00
1.1/4"	32	15	1000.00



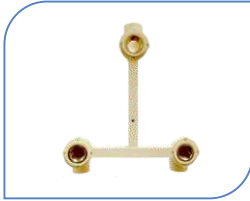
## CONCEALED VALVE (FLT)

INCH	MM	CARTOON	RATE
3/4"	20	15	900.00
1"	25	15	940.00
1.1/4"	32	15	1000.00



## CONCEALED VALVE (ORNAMIX)

INCH	MM	CARTOON	RATE
3/4"	20	15	900.00
1"	25	15	940.00
1.1/4"	32	15	1000.00



## MIXER ADAPTOR (SDR-11)

SIZE		PACKING		RATE
INCH	MM	CARTOON		
3/4" x 1/2"	20 x 15	22		340.00
1" x 1/2"	25 x 15	18		380.00



## BRASS SPINDLE

ITEM	PACKING		RATE
	CARTOON		
BRASS SPINDLE	AS PER ORDER		240.00



## CONCEALED VALVE SET

ITEM	PACKING		RATE
	CARTOON		
TRIANGLE	AS PER ORDER		530.00
FUSION	AS PER ORDER		530.00
FLT	AS PER ORDER		530.00
ORNAMIX	AS PER ORDER		530.00



## NRV VALVE (SDR-11)

SIZE		PACKING		RATE
INCH	MM	TYPE	BOX	
3/4"	20	4 x 6	24	310.00
1"	25	4 x 6	24	332.00
1.1/4"	32	3 x 8	24	358.00



## REDUCER SOCKET (SDR-11)

SIZE		PACKING		RATE
INCH	MM	BAG	CARTOON	
1" x 1/2"	25 x 15	30 x 8	240	21.00
1" x 3/4"	25 x 20	30 x 8	240	22.00
1.1/4" x 3/4"	32 x 20	15 x 8	120	35.00
1.1/4" x 1"	32 x 25	15 x 8	120	40.00
1.1/2" x 3/4"	40 x 20	9 x 12	108	56.00
1.1/2" x 1"	40 x 25	9 x 12	108	65.00
1.1/2" x 1.1/4"	40 x 32	9 x 8	72	65.00
2" x 3/4"	50 x 20	6 x 8	48	99.00
2" x 1"	250 x 25	6 x 8	48	107.00
2" x 1.1/4"	50 x 32	6 x 8	48	115.00
2" x 1.1/2"	50 x 40	4 x 10	40	124.00

## REDUCER SOCKET (SCH-80)

2.1/2" x 2"	65 x 50	-	24	242.00
3" x 2"	80 x 50	-	16	320.00
3" x 2.1/2"	80 x 65	-	16	360.00
4" x 2"	100 x 50	-	08	505.00
4" x 2.1/2"	100 x 65	-	08	550.00
4" x 3"	100 x 80	-	08	617.00



## REDUCER BUSH (SDR-11)

SIZE		PACKING		RATE
INCH	MM	BAG	CARTOON	
1" x 1/2"	-	-	-	-
1" x 3/4"	25 x 20	40 x 8	320	13.50
1.1/4" x 3/4"	32 x 20	30 x 8	240	25.30
1.1/4" x 1"	32 x 25	30 x 8	240	21.40
1.1/2" x 3/4"	40 x 20	20 x 7	140	38.10
1.1/2" x 1"	40 x 25	20 x 7	140	33.10
1.1/2" x 1.1/4"	40 x 32	18 x 8	144	30.00
2" x 3/4"	50 x 20	8 x 8	64	88.60
2" x 1"	50 x 25	8 x 8	64	88.70
2" x 1.1/4"	50 x 32	8 x 8	64	90.00
2" x 1.1/2"	50 x 40	8 x 8	64	83.50

## REDUCER BUSH (SCH-80)

2.1/2" x 2"	65 x 50	6 x 6	36	148.00
3" x 2"	80 x 50	6 x 3	18	291.00
3" x 2.1/2"	80 x 65	6 x 3	18	245.00
4" x 2"	100 x 50	-	12	381.00
4" x 2.1/2"	100 x 65	-	12	405.00
4" x 3"	100 x 80	-	12	393.00



# CPVC Plumbing Pipes & Fittings

Manufacturer of: CPVC Fitting (1/2" to 2") ASTM D-2846 SDR-11 & (2.1/2" to 4")  
 SCH-40 ASTM-F-438 SCH-80 ASTM-F-439  
 CPVC Pipes 1/2" to 2" ASTM D-2846 SDR-11 / SDR-13.5 (2.1/2" to 4") ASTM-F-441



TANK NIPPLE THREAD (SDR-11)				
SIZE		PACKING		RATE
INCH	MM	BAG	CARTOON	
1/2"	15	35 x 4	140	53.00
3/4"	20	25 x 8	200	73.00
1"	25	30 x 4	120	112.00
1.1/4"	32	10 x 8	80	171.00
1.1/2"	40	8 x 8	64	205.00
2"	50	5 x 8	40	320.00



BALL VALVE (SDR-11)				
INCH	MM	BOX	CARTOON	RATE
1/2"	15	12 x 6	72	130.00
3/4"	20	19 x 6	114	180.00
1"	25	12 x 6	72	285.00
1.1/4"	32	6 x 6	36	510.00
1.1/2"	40	4 x 6	24	985.00
2"	50	2 x 6	12	1390.00



REDUCER ELBOW (SDR-11)				
SIZE		PACKING		RATE
INCH	MM	BAG	CARTOON	
1" x 3/4"	25 x 20	30 x 8	240	35.00
1.1/4" x 3/4"	32 x 20	18 x 4	72	65.00
1.1/4" x 1"	32 x 25	16 x 4	64	72.00
1.1/2" x 3/4"	40 x 20	7 x 6	42	102.00
1.1/2" x 1"	40 x 25	7 x 6	42	106.00
1.1/2" x 1.1/4"	40 x 32	6 x 6	36	119.00
2" x 3/4"	50 x 20	3 x 8	24	210.00
2" x 1"	50 x 25	3 x 8	24	220.00
2" x 1.1/4"	50 x 32	3 x 8	24	228.00
2" x 1.1/2"	50 x 40	3 x 8	24	235.00



THREAD ELBOW (SDR-11)				
SIZE		PACKING		RATE
INCH	MM	BAG	CARTOON	
3/4" x 1/2"	20 x 15	22 x 8	176	40.30



THREAD TEE (SDR-11)				
SIZE		PACKING		RATE
INCH	MM	BAG	CARTOON	
3/4" x 1/2"	20 x 15	15 x 8	120	43.70



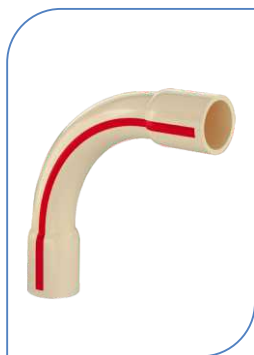
END PLUG (SDR-11)				
SIZE		PACKING		RATE
INCH	MM	BAG	CARTOON	
1/2"	15	45 x 6	270	8.90



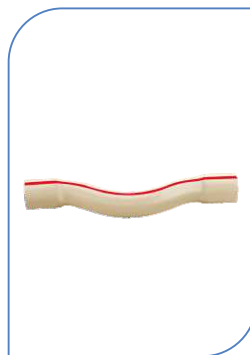
TRANSITION BUSH (SDR-11)				
SIZE		PACKING		RATE
INCH	MM	BAG	CARTOON	
1" x 1"	25 x 25	30 x 8	240	18.00
1" x 3/4"	25 x 20	30 x 8	240	32.20
3/4" x 3/4"	20 x 20	40 x 8	320	12.60



CROSS TEE (SDR-11)				
SIZE		PACKING		RATE
INCH	MM	BAG	CARTOON	
3/4"	20	14 x 8	112	37.00
1"	25	15 x 8	120	70.00
1.1/4"	32	8 x 8	64	119.00



LONG BEND (SDR-11)				
INCH	MM	BAG	CARTOON	RATE
1/2"	15	15 x 8	120	47.10
3/4"	20	8 x 8	64	62.80
1"	25	5 x 7	35	101.00
1.1/4"	32	5 x 8	40	165.00
1.1/2"	40	-	15	265.00
2"	50	-	10	490.00



STEP OVER BEND (SDR-11)				
SIZE		PACKING		RATE
INCH	MM	BAG	CARTOON	
1/2"	15	15 x 8	120	48.00
3/4"	20	10 x 6	60	73.00
1"	25	12 x 6	72	122.00
1.1/4"	32	8 x 6	48	190.00
1.1/2"	40	-	12	312.00
2"	50	-	07	562.00



NAIL CLAMP				
SIZE		PACKING		RATE
INCH	MM	BAG	CARTOON	
1/2"	15	100 x 25	2500	2.35
3/4"	20	100 x 15	1500	2.80
1"	25	100 x 9	900	4.70
1.1/4"	32	50 x 10	500	6.15
1.1/2"	40	25 x 12	300	8.35
2"	50	25 x 10	250	13.90



SOLVENT CEMENT				
ML	BOX	CARTOON	RATE	RETAIL MRP
10 ML Tube	50 x 4	200	18.80	45.00
25 ML Tube	30 x 4	120	32.20	75.00
59 ML Tin	15 x 8	120	72.00	155.00
118 ML Tin	15 x 6	90	120.00	220.00
237 ML Tin	12 x 4	48	223.00	355.00
473 ML Tin	-	12	435.00	495.00

# VIGOR<sup>®</sup>

Complete Plumbing Solution



# UPVC

## PLUMBING PIPE FITTINGS

For Cold Water

### Product Features



HIGH STRENGTH & DURABILITY



ULTRA VOILET RESISTANT



COLD WATER PLUMBING



RESIDENTIAL PURPOSES



IDEAL FOR DRINKING WATER



ULTRA VOILET RESISTANT



NON-TOXIC ECO FRIENDLY



LEAD FREE

# uPVC Plumbing Pipes & Fittings

Manufacturer of : "Lead-Free" uPVC Pipe in ASTM D-1785 SCH-40 & SCH 80  
Fitting: SCH 40 ASTM D-2466, SCH 80 ASTM D-2467



"VIGOR" (SCH - 40 PLAIN)				
SIZE	MM	3-MTR PACK	6-MTR PACK	RATE PER MTR
1/2"	15	50	25	75.00
3/4"	20	40	25	95.00
1"	25	25	15	145.00
1.1/4"	32	15	10	194.00
1.1/2"	40	12	8	234.00
2"	50	8	8	298.00
2.1/2"	65	5	5	473.00
3"	80	4	4	610.00
4"	100	2	2	893.00

"VIGOR" (SCH - 80 PLAIN)				
SIZE	MM	3-MTR PACK	6-MTR PACK	RATE PER MTR
1/2"	15	50	25	90.00
3/4"	20	40	25	125.00
1"	25	25	15	175.00
1.1/4"	32	15	10	249.00
1.1/2"	40	12	8	298.00
2"	50	8	8	396.00
2.1/2"	65	5	5	660.00
3"	80	4	4	835.00
4"	100	2	2	1243.00

"VIGOR" (SCH - 80 THREADED PIPE)			
SIZE	MM	3-MTR PACK	RATE PER MTR
1/2"	15	50	103.00
3/4"	20	40	138.00
1"	25	25	187.00
1.1/4"	32	15	261.00
1.1/2"	40	12	310.00
2"	50	8	408.00
2.1/2"	65	5	674.00
3"	80	4	850.00
4"	100	2	1260.00



ELBOW 90° (SCH - 80)				
SIZE		PACKING		RATE
INCH	MM	BAG	CARTOON	
1/2"	15	90 x 4	360	13.50
3/4"	20	55 x 4	220	21.50
1"	25	30 x 4	120	33.00
1.1/4"	32	18 x 4	72	58.50
1.1/2"	40	12 x 4	48	80.00
2"	50	8 x 4	32	128.00

ELBOW 90° (SCH - 40)				
SIZE		PACKING		RATE
INCH	MM	BAG	CARTOON	
2.1/2"	65	4 x 5	20	180.00
3"	80	4 x 3	12	290.00
4"	100	-	14	580.00



TEE (SCH - 80)				
SIZE		PACKING		RATE
INCH	MM	BAG	CARTOON	
1/2"	15	60 x 4	240	20.00
3/4"	20	35 x 4	140	29.50
1"	25	20 x 4	80	45.40
1.1/4"	32	13 x 4	52	77.00
1.1/2"	40	10 x 3	30	104.00
2"	50	5 x 4	20	171.50

TEE (SCH - 40)				
SIZE		PACKING		RATE
INCH	MM	BAG	CARTOON	
2.1/2"	65	4 x 3	12	250.00
3"	80	3 x 3	09	390.00
4"	100	-	10	770.00



M.T.A. THREAD (SCH - 80)				
SIZE		PACKING		RATE
INCH	MM	BAG	CARTOON	
1/2"	15	50 x 6	300	9.10
3/4"	20	50 x 8	400	13.00
1"	25	60 x 4	240	23.20
1.1/4"	32	9 x 20	180	34.90
1.1/2"	40	8 x 20	160	48.30
2"	50	12 x 8	96	70.00

M.T.A. THREAD (SCH - 80)				
SIZE		PACKING		RATE
INCH	MM	BAG	CARTOON	
2.1/2"	65	-	22	155.00
3"	80	-	16	240.00
4"	100	-	08	430.00



F.T.A. THREAD (SCH - 80)				
SIZE		PACKING		RATE
INCH	MM	BAG	CARTOON	
1/2"	15	65 x 4	260	11.80
3/4"	20	45 x 8	360	17.20
1"	25	50 x 4	200	26.90
1.1/4"	32	25 x 4	100	44.60
1.1/2"	40	20 x 4	80	58.50
2"	50	15 x 4	60	81.70

F.T.A. THREAD (SCH - 80)				
SIZE		PACKING		RATE
INCH	MM	BAG	CARTOON	
2.1/2"	65	-	22	160.00
3"	80	-	24	255.00
4"	100	-	18	460.00



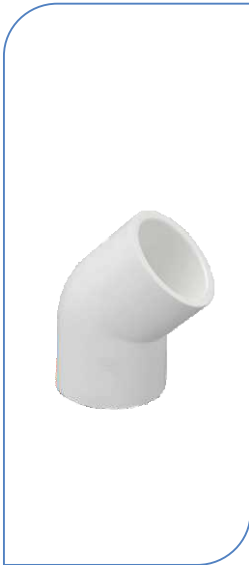
COUPLER (SCH - 80)				
SIZE		PACKING		RATE
INCH	MM	BAG	CARTOON	
1/2"	15	70 x 8	560	9.60
3/4"	20	40 x 8	320	16.60
1"	25	45 x 4	180	26.60
1.1/4"	32	28 x 4	112	38.40
1.1/2"	40	20 x 4	80	50.00
2"	50	14 x 4	56	79.70
2.1/2"	65	9 x 4	36	120.00
3"	80	9 x 3	27	165.00
4"	100	-	10	320.00



END CAP (SCH - 80)				
SIZE		PACKING		RATE
INCH	MM	BAG	CARTOON	
1/2"	15	53 x 8	424	7.50
3/4"	20	55 x 10	550	11.30
1"	25	50 x 3	150	18.20
1.1/4"	32	20 x 8	160	35.30
1.1/2"	40	17 x 8	136	45.90
2"	50	10 x 8	80	66.80
2.1/2"	65	12 x 2	24	95.00
3"	80	14 x 3	42	135.00
4"	100	-	10	275.00

# uPVC Plumbing Pipes & Fittings

Manufacturer of : "Lead-Free" uPVC Pipe in ASTM D-1785 SCH-40 & SCH 80  
Fitting: SCH 40 ASTM D-2466, SCH 80 ASTM D-2467



ELBOW 45° (SCH - 80)				
SIZE		PACKING		RATE
INCH	MM	BAG	CARTOON	
1/2"	15	32 x 8	256	11.60
3/4"	20	35 x 8	280	22.60
1"	25	30 x 5	150	32.30
1.1/4"	32	11 x 8	88	44.50
1.1/2"	40	8 x 8	64	68.70
2"	50	10 x 4	40	107.00

ELBOW 45° (SCH - 40)				
SIZE		PACKING		RATE
INCH	MM	BAG	CARTOON	
2.1/2"	65	4 x 6	24	150.00
3"	80	5 x 3	15	235.00
4"	100	-	16	450.00



SOCKET TANK NIPPLE (SCH - 80)				
SIZE		PACKING		RATE
INCH	MM	BAG	CARTOON	
1/2"	15	40 x 8	320	26.00
3/4"	20	27 x 8	216	34.00
1"	25	30 x 4	120	52.00
1.1/4"	32	20 x 4	80	87.00
1.1/2"	40	15 x 4	60	108.00
2"	50	10 x 4	40	155.00

SOCKET TANK NIPPLE (SCH - 40)				
SIZE		PACKING		RATE
INCH	MM	BAG	CARTOON	
2.1/2"	65	-	09	258.00
3"	80	-	09	320.00
4"	100	-	06	500.00



REDUCER BUSH (SCH - 80)				
SIZE		PACKING		RATE
INCH	MM	BAG	CARTOON	
3/4" x 1/2"	20 x 15	38 x 10	380	7.20
1" x 1/2"	25 x 15	60 x 8	480	14.90
1" x 3/4"	25 x 20	55 x 8	440	10.20
1.1/4" x 1/2"	32 x 15	18 x 8	144	26.90
1.1/4" x 3/4"	32 x 20	18 x 8	144	28.80
1.1/4" x 1"	32 x 25	18 x 8	144	22.80
1.1/2" x 1/2"	40 x 15	12 x 8	96	32.50
1.1/2" x 3/4"	40 x 20	12 x 8	96	33.80
1.1/2" x 1"	40 x 25	12 x 8	96	35.80
1.1/2" x 1.1/4"	40 x 32	12 x 8	96	22.80
2" x 1/2"	50 x 15	8 x 8	64	38.60
2" x 3/4"	50 x 20	8 x 8	64	38.70
2" x 1"	50 x 25	8 x 8	64	39.90
2" x 1.1/4"	50 x 32	8 x 8	64	40.70
2" x 1.1/2"	50 x 40	8 x 8	64	39.30
2.1/2" x 2"	65 x 50	6 x 6	36	78.90
3" x 2"	80 x 50	6 x 3	18	153.00
3" x 2.1/2"	80 x 65	6 x 3	18	130.00
4" x 2"	100 x 50	-	12	200.00
4" x 2.1/2"	100 x 65	-	12	210.00
4" x 3"	100 x 80	-	12	202.00



REDUCER SOCKET (SCH - 80)				
SIZE		PACKING		RATE
INCH	MM	BAG	CARTOON	
3/4" x 1/2"	20 x 15	32 x 10	320	17.00
1" x 1/2"	25 x 15	25 x 8	200	26.00
1" x 3/4"	25 x 20	25 x 8	200	26.00
1.1/4" x 1/2"	32 x 15	9 x 10	90	36.00
1.1/4" x 3/4"	32 x 20	9 x 10	90	36.00
1.1/4" x 1"	32 x 25	15 x 4	60	47.00
1.1/2" x 1/2"	40 x 15	14 x 4	56	44.00
1.1/2" x 3/4"	40 x 20	13 x 4	52	47.00
1.1/2" x 1"	40 x 25	12 x 4	48	57.00
1.1/2" x 1.1/4"	40 x 32	10 x 4	40	60.00
2" x 1/2"	50 x 15	6 x 8	48	68.00
2" x 3/4"	50 x 20	6 x 8	48	68.00
2" x 1"	50 x 25	6 x 6	36	84.00
2" x 1.1/4"	50 x 32	6 x 8	48	75.00
2" x 1.1/2"	50 x 40	4 x 8	32	89.00
2.1/2" x 2"	65 x 50	-	24	120.00
3" x 2"	80 x 50	-	16	160.00
3" x 2.1/2"	80 x 65	-	16	175.00
4" x 2"	100 x 50	-	8	265.00
4" x 2.1/2"	100 x 65	-	8	285.00
4" x 3"	100 x 80	-	8	320.00



UNION (SCH - 80)				
SIZE		PACKING		RATE
INCH	MM	BAG	CARTOON	
1/2"	15	28 x 8	224	36.15
3/4"	20	16 x 8	128	43.60
1"	25	22 x 4	88	67.70
1.1/4"	32	8 x 8	64	96.50
1.1/2"	40	12 x 3	36	145.60
2"	50	9 x 3	27	217.90
2.1/2"	65	8 x 3	24	260.00
3"	80	4 x 3	12	380.00
4"	100	4 x 2	08	700.00



LONG BEND (SCH - 40)				
SIZE		PACKING		RATE
INCH	MM	BAG	CARTOON	
1/2"	15	8 x 8	64	40.00
3/4"	20	6 x 7	42	53.50
1"	25	6 x 8	48	81.00
1.1/4"	32	-	15	120.00
1.1/2"	40	-	12	158.00
2"	50	-	8	240.00
2.1/2"	65	-	-	
3"	80	-	-	
4"	100	-	-	

# uPVC Plumbing Pipes & Fittings

Manufacturer of : "Lead-Free" uPVC Pipe in ASTM D-1785 SCH-40 & SCH 80  
Fitting: SCH 40 ASTM D-2466, SCH 80 ASTM D-2467



BRASS ELBOW (SCH - 80)				
SIZE		PACKING		RATE
INCH	MM	BAG	CARTOON	
1/2"	15	60 x 2	120	76.00
3/4"	20	10 x 8	80	120.00
1"	25	6 x 8	48	180.00
3/4" x 1/2"	20 x 15	28 x 4	112	82.00
1" x 1/2"	25 x 15	18 x 4	72	90.00
1" x 3/4"	25 x 20	10 x 6	60	130.00



BRASS TEE (SCH - 80)				
SIZE		PACKING		RATE
INCH	MM	BAG	CARTOON	
1/2"	15	15 x 6	90	82.00
3/4"	20	10 x 6	60	135.00
1"	25	10 x 4	40	200.00
3/4" x 1/2"	20 x 15	30 x 2	60	91.00
1" x 1/2"	25 x 15	11 x 4	44	115.00
1" x 3/4"	25 x 20	5 x 8	40	160.00
1.1/4" x 1/2"	32 x 15	3 x 12	36	145.00
1.1/4" x 3/4"	32 x 20	3 x 12	36	190.00
1.1/2" x 1/2"	40 x 15	3 x 7	21	178.00
1.1/2" x 3/4"	40 x 20	3 x 7	21	218.00
2" x 1/2"	50 x 15	2 x 8	16	240.00
2" x 3/4"	50 x 20	2 x 8	16	285.00



BRASS ELBOW MABT (SCH - 80)				
SIZE		PACKING		RATE
INCH	MM	BAG	CARTOON	
1/2"	15	13 x 8	104	125.00
3/4" x 1/2"	20 x 15	11 x 8	88	145.00



BRASS TEE MABT (SCH - 80)				
SIZE		PACKING		RATE
INCH	MM	BAG	CARTOON	
1/2"	15	10 x 8	80	145.00
3/4" x 1/2"	20 x 15	6 x 8	48	160.00



BRASS M.T.A. (SCH - 80)				
SIZE		PACKING		RATE
INCH	MM	BAG	CARTOON	
1/2"	15	20 x 8	160	106.00
3/4"	20	14 x 8	112	142.00
1"	25	16 x 4	64	240.00
1.1/4"	32	4 x 8	32	460.00
1.1/2"	40	4 x 8	32	570.00
2"	50	2 x 10	20	750.00
2.1/2"	65	-	09	1224.00
3"	80	-	08	1530.00
4"	100	-	06	2050.00
3/4" x 1/2"	20 x 15	15 x 8	120	107.00
1" x 1/2"	25 x 15	12 x 8	96	120.00
1" x 3/4"	25 x 20	10 x 6	60	190.00



BRASS F.T.A. (SCH - 80)				
SIZE		PACKING		RATE
INCH	MM	BAG	CARTOON	
1/2"	15	45 x 4	180	70.00
3/4"	20	15 x 8	120	110.00
1"	25	19 x 4	76	160.00
1.1/4"	32	4 x 10	40	250.00
1.1/2"	40	4 x 10	40	330.00
2"	50	4 x 7	28	450.00
2.1/2"	65	-	15	760.00
3"	80	-	09	1095.00
4"	100	-	08	1550.00
3/4" x 1/2"	20 x 15	20 x 8	160	72.00
1" x 1/2"	25 x 15	30 x 4	120	78.00
1" x 3/4"	25 x 20	11 x 8	88	138.00



CONCEALED VALVE (TRIANGLE)				
SIZE		PACKING		RATE
INCH	MM	CARTOON		
1/2"	15	15		1120.00
3/4"	20	15		1130.00
1"	25	15		1140.00



CONCEALED VALVE (FUSION)				
SIZE		PACKING		RATE
INCH	MM	CARTOON		
1/2"	15	15		1120.00
3/4"	20	15		1130.00
1"	25	15		1140.00



CONCEALED VALVE (FLT)				
SIZE		PACKING		RATE
INCH	MM	CARTOON		
1/2"	15	15		1120.00
3/4"	20	15		1130.00
1"	25	15		1140.00



CONCEALED VALVE (ORNAMIX)				
SIZE		PACKING		RATE
INCH	MM	CARTOON		
1/2"	15	15		1120.00
3/4"	20	15		1130.00
1"	25	15		1140.00

# uPVC Plumbing Pipes & Fittings

Manufacturer of : "Lead-Free" uPVC Pipe in ASTM D-1785 SCH-40 & SCH 80  
Fitting: SCH 40 ASTM D-2466, SCH 80 ASTM D-2467



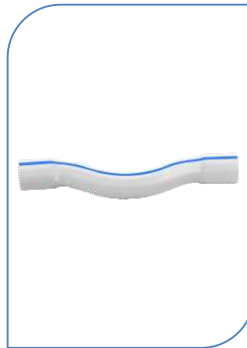
GEMINI BALL VALVE (SCH - 80)				
SIZE		PACKING		RATE
INCH	MM	BOX	CARTOON	
1/2"	15	20 x 6	120	88.00
3/4"	20	13 x 6	78	128.00
1"	25	9 x 6	54	195.00
1.1/4"	32	6 x 6	36	265.00
1.1/2"	40	4 x 6	24	355.00
2"	50	2 x 6	12	545.00
2.1/2"	65			
3"	80			
4"	100			



SUPREME BALL VALVE (SCH - 80)				
SIZE		PACKING		RATE
INCH	MM	BOX	CARTOON	
1/2"	15	17 x 6	102	108.00
3/4"	20	16 x 6	96	145.00
1"	25	12 x 6	72	220.00
1.1/4"	32	6 x 6	36	390.00
1.1/2"	40	4 x 6	24	545.00
2"	50	2 x 6	12	780.00
2.1/2"	65			
3"	80			
4"	100			



APPLE CUT BALL VALVE (SCH - 80)				
SIZE		PACKING		RATE
INCH	MM	BOX	CARTOON	
1/2"	15	24 x 6	144	80.00
3/4"	20	14 x 6	84	103.00
1"	25	10 x 6	60	145.00
1.1/4"	32	6 x 6	36	270.00
1.1/2"	40	4 x 6	24	400.00
2"	50	2 x 6	12	535.00



STEP OVER BEND (SCH - 40)				
SIZE		PACKING		RATE
INCH	MM	BOX	CARTOON	
1/2"	15	6 x 10	60	49.00
3/4"	20	5 x 8	40	58.00
1"	25	6 x 8	48	90.00
1.1/4"	32	-	15	147.00
1.1/2"	40	-	12	198.00
2"	50	-	08	280.00



TANK NIPPLE THREAD (SCH - 80)				
SIZE		PACKING		RATE
INCH	MM	BOX	CARTOON	
1/2"	15	35 x 8	280	27.50
3/4"	20	25 x 8	200	35.30
1"	25	30 x 4	120	55.70
1.1/4"	32	16 x 4	64	85.30
1.1/2"	40	14 x 4	56	102.00
2"	50	9 x 4	36	140.00



TANK NIPPLE PIPE (SCH - 80)				
SIZE		PACKING		RATE
INCH	MM	BOX	CARTOON	
1/2"	15	50 x 4	200	32.50
3/4"	20	35 x 4	140	46.40
1"	25	25 x 4	100	67.70
1.1/4"	32	16 x 4	64	107.00
1.1/2"	40	13 x 4	52	121.00
2"	50	9 x 4	36	172.00



REDUCER TEE (SCH - 80)				
SIZE		PACKING		RATE
INCH	MM	BAG	CARTOON	
3/4" x 1/2"	20 x 15	23 x 8	184	30.60
1" x 1/2"	25 x 15	30 x 4	120	43.10
1" x 3/4"	25 x 20	16 x 6	96	52.00
1.1/4" x 1/2"	32 x 15	10 x 6	60	78.00
1.1/4" x 3/4"	32 x 20	10 x 6	60	81.00
1.1/4" x 1"	32 x 25	9 x 6	54	87.00
1.1/2" x 1/2"	40 x 15	7 x 6	42	100.00
1.1/2" x 3/4"	40 x 20	7 x 6	42	103.00
1.1/2" x 1"	40 x 25	7 x 6	42	115.00
1.1/2" x 1.1/4"	40 x 32	6 x 6	36	117.00
2" x 1/2"	50 x 15	6 x 4	24	166.00
2" x 3/4"	50 x 20	6 x 4	24	157.00
2" x 1"	50 x 25	6 x 4	24	160.00
2" x 1.1/4"	50 x 32	5 x 4	20	166.00
2" x 1.1/2"	50 x 40	5 x 4	20	172.00



NRV VALVE (SCH - 80)				
SIZE		PACKING		RATE
INCH	MM	BAG	CARTOON	
1/2"	15	4 x 6	24	220.00
3/4"	20	4 x 6	24	230.00
1"	25	3 x 8	24	240.00



REDUCER ELBOW (SCH - 80)				
SIZE		PACKING		RATE
INCH	MM	BAG	CARTOON	
3/4" x 1/2"	20 x 15	35 x 8	280	25.50
1" x 1/2"	25 x 15	25 x 7	175	38.30
1" x 3/4"	25 x 20	18 x 8	144	42.70



TRANSITION BUSH (SCH - 80)				
SIZE		PACKING		RATE
INCH	MM	BAG	CARTOON	
1" x 1"	25 x 25	30 x 8	240	9.80
1" x 3/4"	25 x 20	30 x 8	240	16.80
3/4" x 3/4"	20 x 20	30 x 10	300	6.60



# uPVC Plumbing Pipes & Fittings

Manufacturer of : "Lead-Free" uPVC Pipe in ASTM D-1785 SCH-40 & SCH 80  
 Fitting: SCH 40 ASTM D-2466, SCH 80 ASTM D-2467



THREAD ELBOW (SCH - 80)				
SIZE		PACKING		RATE
INCH	MM	BAG	CARTOON	
1/2"	15	22 x 8	176	21.30
3/4"	20			
1"	25			
3/4" x 1/2"	20 x 15	15 x 8	120	29.00
1" x 1/2"	25 x 15	10 x 8	80	40.00



THREAD TEE (SCH - 80)				
SIZE		PACKING		RATE
INCH	MM	BAG	CARTOON	
1/2"	15	15 x 8	120	32.00
3/4"	20			
1"	25			
3/4" x 1/2"	20 x 15	10 x 8	80	38.00
1" x 1/2"	25 x 15	8 x 6	48	51.00



CROSS TEE (SCH - 80)				
SIZE		PACKING		RATE
INCH	MM	BAG	CARTOON	
1/2"	15	25 x 8	200	30.00
3/4"	20	15 x 8	120	45.00
1"	25	15 x 4	60	76.00
1.1/4"	32			
1.1/2"	40			
2"	50			



END PLUG				
SIZE		PACKING		RATE
INCH	MM	BAG	CARTOON	
1/2"	15	45 x 6	270	10.60



SOLID END PLUG (BLACK)				
SIZE		PACKING		RATE
INCH	MM	BAG	CARTOON	
1/2"	15	70 x 6	420	3.80



NAIL CLAMP				
SIZE		PACKING		RATE
INCH	MM	BAG	CARTOON	
1/2"	15	100 x 14	1400	2.75
3/4"	20	100 x 8	800	4.55
1"	25	100 x 6	600	5.90
1.1/4"	32	50 x 8	400	8.10
1.1/2"	40	25 x 12	300	9.95
2"	50	25 x 8	200	14.40



SOLVENT CEMENT				
ML	BOX	CARTOON	RATE	RETAIL MRP
10 ML Tube	50 x 4	200	15.40	35.00
25 ML Tube	30 x 4	120	28.40	55.00
59 ML Tin	15 x 8	120	60.50	110.00
118 ML Tin	15 x 6	90	102.00	160.00
237 ML Tin	12 x 4	48	185.00	265.00
473 ML Tin	-	12	385.00	450.00



CONCEALED VALVE SET		
PACKING		RATE
ITEM	CARTOON	
TRIANGLE	AS PER ORDER	530.00
FUSION	AS PER ORDER	530.00
FLT	AS PER ORDER	530.00
ORNAMIX	AS PER ORDER	530.00



BRASS SPINDLE		
PACKING		RATE
ITEM	CARTOON	
BRASS SPINDLE	AS PER ORDER	240.00



Complete Plumbing Solution



# VIGOR®

Complete Plumbing Solution



# SWR

## RING FIT PIPE FITTINGS For Sewage Waste & Rain Water

### Product Features



LIGHT WEIGHT



LEAK PROOF JOINTS



ULTRA VIOLET STABILIZED



SEWAGE & WASTE WATER LINES



INDUSTRIAL USAGE



RAIN WATER DRAINAGE



OFFICE & RESIDENTIAL PURPOSE

## SWR RING-FIT PIPES



SWR RING FIT PIPE (TYPE-A) SINGLE SOCKET			
INCH	SIZE (mm)	STD. LENGTH (feet)	RATE PER PCS
2.1/2"	75	10	547.00
3"	90	10	765.00
4"	110	10	1045.00
6"	160	10	2217.00

SWR RING FIT PIPE (TYPE-A) DOUBLE SOCKET			
INCH	SIZE (mm)	STD. LENGTH (feet)	RATE PER PCS
2.1/2"	75	10	564.00
3"	90	10	790.00
4"	110	10	1074.00
6"	160	10	2290.00



BEND 87.5°		
SIZE	BOX	RATE
75	100	107.00
90	60	153.00
110	40	196.00
60	14	510.00



BEND 87.5° (DOOR)		
SIZE	BOX	RATE
75	84	138.00
90	50	185.00
110	32	250.00
60	12	600.00



SHOE BEND 45°		
SIZE	BOX	RATE
75	58	85.00
90	75	115.00
110	52	175.00
160	15	420.00



TEE 87.5°		
SIZE	BOX	RATE
75	65	150.00
90	45	225.00
110	28	280.00
160	09	760.00



TEE (DOOR)		
SIZE	BOX	RATE
75	55	210.00
90	36	265.00
110	20	350.00
160	07	825.00



COUPLER		
SIZE	BOX	RATE
75	75	68.00
90	45	107.00
110	72	128.00
160	27	380.00



REDUCER TEE		
SIZE	BOX	RATE
110 X 75	30	250.00
110 X 90	28	280.00
160 X 110	10	670.00



REDUCER TEE (DOOR)		
SIZE	BOX	RATE
110 X 75	24	270.00
110 X 90	20	347.00
160 X 110	09	730.00



CLEANSING PIPE		
SIZE	BOX	RATE
75	42	160.00
90	22	220.00
110	32	280.00



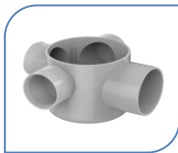
P TRAP		
SIZE	BOX	RATE
110 X 110	18	375.00
125 X 110	18	395.00



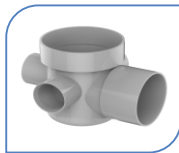
Q TRAP		
SIZE	BOX	RATE
110 X 110	17	415.00
125 X 110	17	440.00



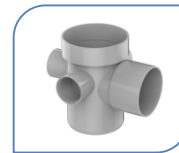
S TRAP		
SIZE	BOX	RATE
110 X 110	15	480.00
125 X 110	15	505.00



MULTI FLOOR TRAP(4"INCH)		
SIZE	BOX	RATE
110 x 75	50	210.00



MULTI FLOOR TRAP(5"INCH)		
SIZE	BOX	RATE
110 X 75	40	250.00
110 X 90	36	260.00



MULTI FLOOR TRAP(7"INCH)		
SIZE	BOX	RATE
110 X 75	30	300.00
110 X 90	28	320.00



SINGLE Y		
SIZE	BOX	RATE
75	24	165.00
90	30	263.00
110	21	370.00



SINGLE Y (DOOR)		
SIZE	BOX	RATE
75	22	210.00
90	28	311.00
110	18	455.00



NAHANI TRAP SOLID		
SIZE	BOX	RATE
110 X 75	55	160.00
110 X 90	45	190.00
110 X 110	40	210.00



CROSE TEE		
SIZE	BOX	RATE
75	48	188.00
90	28	280.00
110	20	360.00



CROSE TEE (DOOR)		
SIZE	BOX	RATE
75	42	201.00
90	20	340.00
110	16	420.00



REDUCER BUSH		
SIZE	BOX	RATE
110 X 63	15	83.00
110 X 75	15	81.00
110 X 90	15	78.00



VENT COWL		
SIZE	BOX	RATE
63	72	20.00
75	120	29.50
90	63	37.00
110	120	52.00



REDUCER SOCKET		
SIZE	BOX	RATE
110 x 75	45	126.00
110 x 90	30	132.00
160 x 90	24	230.00
160 x 110	24	240.00



RUBBER RING		
SIZE	BOX	RATE
75	680	4.50
90	420	6.10
110	250	7.00
160	75	18.50

# VIGOR®

Complete Plumbing Solution



# SWR

## SEL FIT PIPE FITTINGS

### For Sewage Waste & Rain Water

#### Product Features



LIGHT WEIGHT



LEAK PROOF JOINTS



ULTRA VOILET STABILIZED



SEWAGE & WASTE WATER LINES



INDUSTRIAL USAGE



RAIN WATER DRAINAGE



OFFICE & RESIDENTIAL PURPOSE

## SWR SEL-FIT PIPES



A TYPE SINGLE SOCKET (SEL FIT 10-FT.)			
INCH	SIZE (mm)	STD. LENGTH (feet)	RATE PER PCS
1.1/4"	40 MM	10	340.00
1.1/2"	50 MM	10	433.00
2"	63 MM	10	495.00
2.1/2"	75 MM	10	540.00
3"	90 MM	10	757.00
4"	110 MM	10	1033.00
5"	140 MM	10	1803.00
6"	160 MM	10	2188.00

A TYPE SINGLE SOCKET (SEL FIT 20-FT.)			
INCH	SIZE (mm)	STD. LENGTH (feet)	RATE PER PCS
1.1/4"	40 MM	20	680.00
1.1/2"	50 MM	20	866.00
2"	63 MM	20	990.00
2.1/2"	75 MM	20	1080.00
3"	90 MM	20	1514.00
4"	110 MM	20	2066.00
5"	140 MM	20	3606.00
6"	160 MM	20	4376.00



BEND 87.5°		
SIZE	BOX	RATE
75	52	87.00
90	75	118.00
110	45	165.00
160	14	480.00



BEND 87.5° (DOOR)		
SIZE	BOX	RATE
75	42	117.00
90	65	160.00
110	36	230.00
160	12	570.00



SHOE BEND 45°		
SIZE	BOX	RATE
75	65	75.00
90	40	100.00
110	60	139.00
160	18	400.00



TEE 87.5°		
SIZE	BOX	RATE
75	80	120.00
90	50	165.00
110	30	230.00
160	09	700.00



TEE (DOOR)		
SIZE	BOX	RATE
75	65	190.00
90	36	240.00
110	20	325.00
160	07	770.00



COUPLER		
SIZE	BOX	RATE
75	76	55.50
90	48	93.00
110	70	109.00
160	27	320.00



REDUCER TEE		
SIZE	BOX	RATE
110 x 75	30	232.00
110 x 90	28	260.00
160 x 110	10	650.00



REDUCER TEE (DOOR)		
SIZE	BOX	RATE
110 x 75	24	250.00
110 x 90	20	329.00
160 x 110	09	721.00



CLEANSING PIPE		
SIZE	BOX	RATE
75	42	145.00
90	22	210.00
110	32	252.00



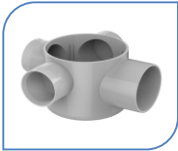
P TRAP		
SIZE	BOX	RATE
110 x 110	18	375.00
125 x 110	18	395.00



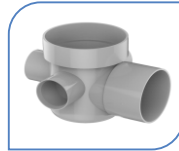
Q TRAP		
SIZE	BOX	RATE
110 x 110	17	415.00
125 x 110	17	440.00



S TRAP		
SIZE	BOX	RATE
110 x 110	15	480.00
125 x 110	15	505.00



MULTI FLOOR TRAP(4"INCH)		
SIZE	BOX	RATE
110 x 75	50	210.00



MULTI FLOOR TRAP(5"INCH)		
SIZE	BOX	RATE
110 x 75	40	250.00
110 x 90	36	260.00



MULTI FLOOR TRAP(7"INCH)		
SIZE	BOX	RATE
110 x 75	30	300.00
110 x 90	28	320.00



SINGLE Y		
SIZE	BOX	RATE
75	24	150.00
90	30	245.00
110	21	360.00



SINGLE Y (DOOR)		
SIZE	BOX	RATE
75	22	190.00
90	28	285.00
110	18	430.00



REDUCER BUSH		
SIZE	BOX	RATE
110 x 63	15	83.00
110 x 75	15	81.00
110 x 90	15	78.00



CROSE TEE		
SIZE	BOX	RATE
75	48	171.00
90	28	250.00
110	20	330.00



CROSE TEE (DOOR)		
SIZE	BOX	RATE
75	42	184.00
90	24	310.00
110	16	390.00



NAIL CLAMP		
SIZE	BOX	RATE
63	140	9.90
75	80	15.00
90	65	21.00
110	50	26.00



NAHANI TRAP SOLID		
SIZE	BOX	RATE
110 x 63	65	145.00
110 x 75	55	160.00
110 x 90	45	190.00
110 x 110	40	210.00



REDUCER SOCKET		
SIZE	BOX	RATE
110 x 75	45	119.00
110 x 90	45	125.00
160 x 90	24	225.00
160 x 110	24	235.00

# VIGOR®

Complete Plumbing Solution



## AGRICULTURE PVC

### PIPES & FITTINGS

Agriculture & Water Distribution System

#### Product Features



HIGH STRENGTH & DURABILITY



CRACK & LEAK PROOF



SMOOTH FLOW INTERNAL SURFACE



AGRICULTURAL & IRRIGATION USAGE



IDEAL FOR HARSH ENVIRONMENTS



LEAD FREE



IS : 4985  
  
CML - 7200168407

### AGRICULTURE - PVC SEL-FIT ISI PIPE

IS : 4985  
  
CML - 7200168407

IS : 7834  
  
CML - 7300105818

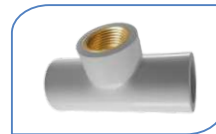
INCH	MM	FEET	2.5 Kg/Cm <sup>2</sup>	4 Kg/Cm <sup>2</sup>	6 Kg/Cm <sup>2</sup>	10 Kg/Cm <sup>2</sup> (HIGH PRESSURE)
			RATE PER PCS	RATE PER PCS	RATE PER PCS	RATE PER PCS
* 1/2"	20(mm)	20	-	-	-	292.00
* 3/4"	25(mm)	20	-	-	-	356.00
* 1"	32(mm)	20	-	-	-	550.00
1.1/4"	40(mm)	20	-	-	492.00	-
1.1/2"	50(mm)	20	-	-	738.00	-
2"	63(mm)	20	-	835.00	1138.00	-
2.1/2"	75(mm)	20	-	1115.00	1630.00	-
3"	90(mm)	20	1080.00	1640.00	2336.00	-
4"	110(mm)	20	1640.00	2400.00	3382.00	-
5"	140 (mm)	20	2440.00	3875.00	5380.00	-
6"	160(mm)	20	3345.00	5165.00	7195.00	-
7"	180(mm)	20	4170.00	6300.00	9068.00	-
8"	200(mm)	20	5250.00	7933.00	11715.00	-

\* Non ISI Products



**BRASS ELBOW 16 kg/cm<sup>2</sup> (PN-16)**

INCH	MM	BAG	CARTOON	RATE
3/4" x 1/2"	25 x 1/2"	20 x 6	120	79.00
1" x 1/2"	32 x 1/2"	14 x 6	84	86.00



**BRASS TEE 16 kg/cm<sup>2</sup> (PN-16)**

INCH	MM	BAG	CARTOON	RATE
3/4" x 1/2"	25 x 1/2"	10 X 8	80	85.00
1" x 1/2"	32 x 1/2"	9 X 6	54	97.00



**BRASS M.T.A. 16 kg/cm<sup>2</sup> (PN-16)**

INCH	MM	BAG	CARTOON	RATE
3/4" x 1/2"	25 x 1/2"	24 x 6	144	110.00
1" x 1/2"	32 x 1/2"	14 x 8	112	117.00



**BRASS F.T.A. 16 kg/cm<sup>2</sup> (PN-16)**

INCH	MM	BAG	CARTOON	RATE
3/4" x 1/2"	25 x 1/2"	22 x 8	176	72.00
1" x 1/2"	32 x 1/2"	15 x 8	120	77.00



**BRASS ELBOW 10 kg/cm<sup>2</sup>**

INCH	MM	BAG	CARTOON	RATE
1/2"	20 x 1/2"	28 x 8	224	65.00
3/4" x 1/2"	25 x 1/2"	20 x 8	160	70.00
1" x 1/2"	32 x 1/2"	17 x 6	102	75.00



**BRASS TEE 10 kg/cm<sup>2</sup>**

INCH	MM	BAG	CARTOON	RATE
1/2"	20 x 1/2"	19 x 8	152	70.00
3/4" x 1/2"	25 x 1/2"	14 x 8	112	74.00
1" x 1/2"	32 x 1/2"	8 x 8	64	80.00



**BRASS M.T.A. 10 kg/cm<sup>2</sup>**

INCH	MM	BAG	CARTOON	RATE
1/2"	20 x 1/2"	30 x 8	240	100.00
3/4" x 1/2"	25 x 1/2"	25 x 8	200	102.00
1" x 1/2"	32 x 1/2"	20 x 8	160	104.00



**BRASS F.T.A. 10 kg/cm<sup>2</sup>**

INCH	MM	BAG	CARTOON	RATE
1/2"	20 x 1/2"	32 x 8	256	62.00
3/4" x 1/2"	25 x 1/2"	28 x 8	224	64.00
1" x 1/2"	32 x 1/2"	22 x 8	176	66.00



**ELBOW (L-W) 04 kg/cm<sup>2</sup>**

INCH	MM	BAG	CARTOON	RATE
1.1/4"	40	28 x 4	112	17.00
1.1/2"	50	-	-	23.00
2"	63	11 x 3	33	42.00
2.1/2"	75	-	60	57.00
3"	90	-	76	88.00
4"	110	-	50	114.00
5"	140	-	21	260.00
6"	160	-	17	335.00



**TEE (L-W) 04 kg/cm<sup>2</sup>**

INCH	MM	BAG	CARTOON	RATE
1.1/4"	40	23 x 3	69	22.00
1.1/2"	50	-	-	32.00
2"	63	-	58	60.00
2.1/2"	75	-	40	80.00
3"	90	-	60	116.00
4"	110	-	28	175.00
5"	140	-	14	365.00
6"	160	-	10	485.00



**ELBOW ISI 10 kg/cm<sup>2</sup>**

INCH	MM	BAG	CARTOON	RATE
1/2"	20	40 x 6	240	9.40
3/4"	25	20 x 8	160	12.50
1"	32	24 x 4	96	18.00



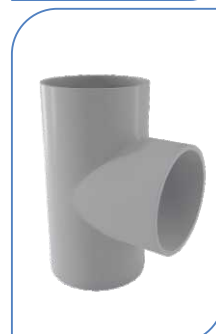
**TEE ISI 10 kg/cm<sup>2</sup>**

INCH	MM	BAG	CARTOON	RATE
1/2"	20	28 x 6	168	12.20
3/4"	25	13 x 8	104	16.50
1"	32	16 x 4	64	23.20



**ELBOW ISI 6 kg/cm<sup>2</sup>**

INCH	MM	BAG	CARTOON	RATE
1.1/4"	40	25 x 4	100	29.00
1.1/2"	50	14 x 4	56	46.00
2"	63	7 x 4	28	69.00
2.1/2"	75	-	48	100.00
3"	90	-	70	173.00
4"	110	-	40	270.00
5"	140	-	18	500.00
6"	160	-	14	740.00
4" x 3"	110 x 90	-	62	155.00



**TEE ISI 6 kg/cm<sup>2</sup>**

INCH	MM	BAG	CARTOON	RATE
1.1/4"	40	17 x 4	68	38.00
1.1/2"	50	9 x 4	36	64.00
2"	63	-	55	97.00
2.1/2"	75	-	34	138.00
3"	90	-	50	210.00
4"	110	-	28	375.00
5"	140	-	12	640.00
6"	160	-	10	930.00



COUPLER 10 kg/cm <sup>2</sup>				
INCH	MM	BAG	CARTOON	RATE
1/2"	20	45 x 8	360	6.80
3/4"	25	30 x 8	240	9.10
1"	32	36 x 4	144	12.80



SHOE BEND 45° (EQUAL) 10 kg/cm <sup>2</sup>				
INCH	MM	BAG	CARTOON	RATE
1/2"	20	40 x 8	320	9.30
3/4"	25	28 x 6	168	12.80
1"	32	25 x 4	100	19.10



COUPLER 06 kg/cm <sup>2</sup>				
INCH	MM	BAG	CARTOON	RATE
1.1/4"	40	20 x 8	160	15.50
1.1/2"	50	23 x 4	92	23.00
2"	63	14 x 4	56	45.50
2.1/2"	75	-	76	55.50
3"	90	-	48	93.00
4"	110	-	70	109.00
5"	140	-	36	270.00
6"	160	-	27	320.00



SHOE BEND 45° (EQUAL) 06 kg/cm <sup>2</sup>				
INCH	MM	BAG	CARTOON	RATE
1.1/4"	40	15 x 8	120	27.30
1.1/2"	50	11 x 6	66	55.50
2"	63	10 x 4	40	77.00
2.1/2"	75	-	65	82.00
3"	90	-	40	108.00
4"	110	-	60	150.00
5"	140	-	27	360.00
6"	160	-		



REDUCER SOCKET 10 kg/cm <sup>2</sup>				
INCH	MM	BAG	CARTOON	RATE
3/4" x 1/2"	25 x 20	27 x 10	270	8.80
1" x 1/2"	32 x 20	25 x 8	200	13.00
1" x 3/4"	32 x 25	24 x 8	192	12.80



REDUCER BUSH 10 kg/cm <sup>2</sup>				
INCH	MM	BAG	CARTOON	RATE
3/4" x 1/2"	25 x 20	55 x 10	550	4.20
1" x 1/2"	32 x 20	40 x 8	320	9.00
1" x 3/4"	32 x 25	40 x 8	320	8.40



REDUCER SOCKET 06 kg/cm <sup>2</sup>				
INCH	MM	BAG	CARTOON	RATE
1.1/4" x 3/4"	40 x 25	30 x 4	120	17.00
1.1/4" x 1"	40 x 32	26 x 4	104	18.40
1.1/2" x 1"	50 x 32	12 x 10	120	22.50
1.1/2" x 1.1/4"	50 x 40	09x 10	90	25.00
2" x 1"	63 x 32	28 x 5	140	34.70
2" x 1.1/4"	63 x 40	28 x 5	140	35.20
2" x 1.1/2"	63 x 50	28 x 5	140	45.60
2.1/2" x 1.1/4"	75 x 40	18 x 4	72	54.00
2.1/2" x 1.1/2"	75 x 50	18 x 4	72	55.00
2.1/2" x 2"	75 x 63	18 x 4	72	61.00
3" x 1.1/2"	90 x 50	-	45	70.00
3" x 2"	90 x 63	-	45	82.00
3" x 2.1/2"	90 x 75	-	45	73.00
4" x 2"	110 x 63	-	60	132.00
4" x 2.1/2"	110 x 75	-	60	138.00
4" x 3"	110 x 90	-	60	138.00
5" x 2"	140 x 63	-	28	191.00
5" x 2.1/2"	140 x 75	-	28	197.00
5" x 3"	140 x 90	-	28	210.00
5" x 4"	140 x 110	-	28	225.00
6" x 2"	160 x 63	-	21	236.00
6" x 2.1/2"	160 x 75	-	21	238.00
6" x 3"	160 x 90	-	21	240.00
6" x 4"	160 x 110	-	21	262.00
6" x 5"	160 x 140	-	21	270.00



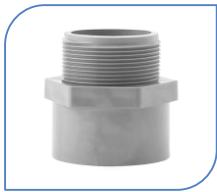
REDUCER BUSH 06 kg/cm <sup>2</sup>				
INCH	MM	BAG	CARTOON	RATE
1.1/4" x 3/4"	40 x 25	20 x 8	160	15.00
1.1/4" x 1"	40 x 32	20 x 8	160	15.00
1.1/2" x 1"	50 x 32	12 x 8	96	30.00
1.1/2" x 1.1/4"	50 x 40	12 x 8	96	30.00
2" x 1"	63 x 32	8 x 8	64	40.00
2" x 1.1/4"	63 x 40	8 x 8	64	42.00
2" x 1.1/2"	63 x 50	8 x 8	64	44.00
2.1/2" x 1.1/4"	75 x 40	6 x 7	42	66.00
2.1/2" x 1.1/2"	75 x 50	6 x 7	42	64.00
2.1/2" x 2"	75 x 63	6 x 7	42	60.00
3" x 1.1/2"	90 x 50	-	27	88.00
3" x 2"	90 x 63	-	27	94.00
3" x 2.1/2"	90 x 75	-	27	90.00
4" x 2"	110 x 63	-	15	121.00
4" x 2.1/2"	110 x 75	-	15	123.00
4" x 3"	110 x 90	-	15	155.00
5" x 2"	140 x 63	-	16	315.00
5" x 2.1/2"	140 x 75	-	16	324.00
5" x 3"	140 x 90	-	16	310.00
5" x 4"	140 x 110	-	16	320.00
6" x 2"	160 x 63	-		
6" x 2.1/2"	160 x 75	-		
6" x 3"	160 x 90	-		
6" x 4"	160 x 110	-		
6" x 5"	160 x 140	-		



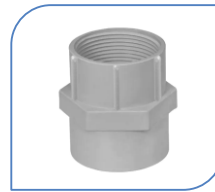
ELBOW (DOOR) 04 kg/cm <sup>2</sup>				
SIZE		PACKING		RATE
INCH	MM	BAG	CARTOON	
1.1/4"	40			
1.1/2"	50			
2"	63			
2.1/2"	75			
3"	90			
4"	110			



UNION 16 kg/cm <sup>2</sup>				
SIZE		PACKING		RATE
INCH	MM	BAG	CARTOON	
1/2"	20	25 x 4	100	42.00
3/4"	25	17 x 4	68	49.00
1"	32	10 x 4	40	76.00
1.1/4"	40	8 x 4	32	100.00
1.1/2"	50	4 x 5	20	155.00
2"	63	2 x 5	10	210.00



MTA THREAD 10 kg/cm <sup>2</sup>				
INCH	MM	BAG	CARTOON	RATE
1/2"	20	40 x 6	320	7.30
3/4"	25	40 x 6	240	11.60
1"	32	55 x 6	330	14.50



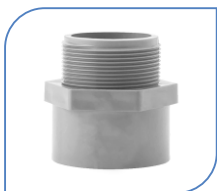
FTA THREAD 10 kg/cm <sup>2</sup>				
INCH	MM	BAG	CARTOON	RATE
1/2"	20	35 x 8	280	9.00
3/4"	25	35 x 6	210	12.30
1"	32	45 x 6	270	15.70



MTA THREAD 06 kg/cm <sup>2</sup>				
INCH	MM	BAG	CARTOON	RATE
1.1/4"	40	30 x 6	180	24.50
1.1/2"	50	18 x 6	108	36.50
2"	63			
2.1/2"	75			
3"	90			
4"	110			
5"	140			
6"	160			



FTA THREAD 06 kg/cm <sup>2</sup>				
INCH	MM	BAG	CARTOON	RATE
1.1/4"	40	25 x 6	150	25.50
1.1/2"	50	22 x 4	88	37.00
2"	63			
2.1/2"	75			
3"	90			
4"	110			
5"	140			
6"	160			



REDUCER MTA THREAD 10 kg/cm <sup>2</sup>				
INCH	MM	BAG	CARTOON	RATE
3/4" x 1/2"	25 x 20	40 x 6	240	9.70
1" x 1/2"	32 x 20	27 x 6	162	12.70
1" x 3/4"	32 x 25	25 x 6	150	14.60



REDUCER FTA THREAD 10 kg/cm <sup>2</sup>				
INCH	MM	BAG	CARTOON	RATE
3/4" x 1/2"	25 x 20	35 x 6	210	11.40
1" x 1/2"	32 x 20	24 x 6	144	15.70
1" x 3/4"	32 x 25	22 x 6	132	16.20



REDUCER MTA THREAD 06 kg/cm <sup>2</sup>				
INCH	MM	BAG	CARTOON	RATE
1.1/2" x 1.1/4"	50 x 40			
2.1/2" x 2"	75 x 63			
3" x 2"	90 x 63			
3" x 2.1/2"	90 x 75			
4" x 2"	110 x 63			
4" x 2.1/2"	110 x 75			
4" x 3"	110 x 90			
6" x 5"	160 x 140			



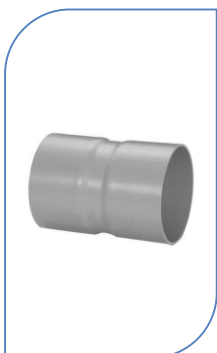
REDUCER FTA THREAD 06 kg/cm <sup>2</sup>				
INCH	MM	BAG	CARTOON	RATE
1.1/2" x 1.1/4"	50 x 40	25 x 4	100	35.00
2.1/2" x 2"	75 x 63			
3" x 2"	90 x 63			
3" x 2.1/2"	90 x 75			
4" x 2"	110 x 63			
4" x 2.1/2"	110 x 75			
4" x 3"	110 x 90			
6" x 5"	160 x 140			



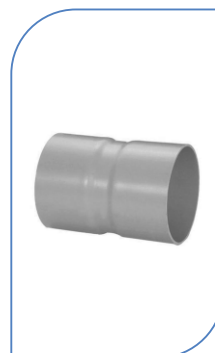
LONG BEND 04 kg/cm <sup>2</sup>			
SIZE		PACKING	RATE
INCH	MM	CARTOON	
1.1/4"	40	-	-
1.1/2"	50	-	-
2"	63	20	115.00
2.1/2"	75	15	156.00
3"	90	10	247.00
4"	110	07	385.00
5"	140	04	860.00
6"	160	03	1250.00



LONG BEND 06 kg/cm <sup>2</sup>			
SIZE		PACKING	RATE
INCH	MM	CARTOON	
1.1/4"	40	60	62.00
1.1/2"	50	40	100.00
2"	63	20	144.00
2.1/2"	75	15	210.00
3"	90	10	345.00
4"	110	07	520.00
5"	140	04	1210.00
6"	160	03	1700.00



FABRICATED COUPLER 04 kg/cm <sup>2</sup>			
SIZE		PACKING	RATE
INCH	MM	CARTOON	
2"	63	40	37.00
2.1/2"	75	30	49.50
3"	90	40	74.00
4"	110	23	111.00
5"	140	12	225.00
6"	160	09	345.00



FABRICATED COUPLER 06 kg/cm <sup>2</sup>			
SIZE		PACKING	RATE
INCH	MM	CARTOON	
2"	63	40	45.20
2.1/2"	75	30	70.00
3"	90	40	107.00
4"	110	23	160.00
5"	140	12	310.00
6"	160	09	470.00





END CAP 10 kg/cm <sup>2</sup>				
INCH	MM	BAG	CARTOON	RATE
1/2"	20	80 x 8	640	4.70
3/4"	25	50 x 8	400	5.80
1"	32	35 x 8	280	8.20



THREAD END CAP 10 kg/cm <sup>2</sup>				
INCH	MM	BAG	CARTOON	RATE
1/2"	20	55 x 8	440	7.50
3/4"	25	40 x 8	320	9.30
1"	32	30 x 8	240	11.00



END CAP 06 kg/cm <sup>2</sup>				
INCH	MM	BAG	CARTOON	RATE
1.1/4"	40	40 x 4	160	13.50
1.1/2"	50	23 x 4	92	17.60
2"	63	22 x 4	88	38.00
2.1/2"	75	-	65	49.70
3"	90	-	45	69.50
4"	110	-	60	132.00
5"	140	-	32	190.00
6"	160	-	28	215.00



THREAD END CAP 06 kg/cm <sup>2</sup>				
INCH	MM	BAG	CARTOON	RATE
1.1/4"	40	24 x 6	144	17.50
1.1/2"	50			
2"	63			
2.1/2"	75			
3"	90			
4"	110			
5"	140			
6"	160			



REPAIR COUPLER 04 kg/cm <sup>2</sup>				
SIZE		PACKING		RATE
INCH	MM	BAG	CARTOON	
2"	63			
2.1/2"	75			
3"	90			
4"	110			
5"	140			
6"	160			



REPAIR COUPLER 06 kg/cm <sup>2</sup>				
SIZE		PACKING		RATE
INCH	MM	BAG	CARTOON	
2"	63			
2.1/2"	75			
3"	90			
4"	110			
5"	140			
6"	160			



SERVICE SADDLE PLAIN				
SIZE		PACKING		RATE
INCH	MM	BAG	CARTOON	
1.1/2" X 1/2"	50 X 1/2"	21 X 4	84	85.00
1.1/2" X 3/4"	50 X 3/4"	21 X 4	84	85.00
1.1/2" X 1"	50 X 1"	21 X 4	84	85.00
2" X 1/2"	63 X 1/2"	-	54	107.00
2" X 3/4"	63 X 3/4"	-	54	107.00
2" X 1"	63 X 1"	-	54	107.00
2.1/2" X 1/2"	75 X 1/2"	-	42	108.00
2.1/2" X 3/4"	75 X 3/4"	-	42	108.00
2.1/2" X 1"	75 X 1"	-	42	108.00
3" X 1/2"	90 X 1/2"	12 X 3	36	129.00
3" X 3/4"	90 X 3/4"	12 X 3	36	129.00
3" X 1"	90 X 1"	12 X 3	36	129.00
4" X 1/2"	110 X 1/2"	-	30	180.00
4" X 3/4"	110 X 3/4"	-	30	180.00
4" X 1"	110 X 1"	-	30	180.00
5" X 1/2"	140 X 1/2"	-	22	231.00
5" X 3/4"	140 X 3/4"	-	22	231.00
5" X 1"	140 X 1"	-	22	231.00
6" X 1/2"	160 X 1/2"	-	17	249.00
6" X 3/4"	160 X 3/4"	-	17	249.00
6" X 1"	160 X 1"	-	17	249.00



BRASS SERVICE SADDLE				
SIZE		PACKING		RATE
INCH	MM	BAG	CARTOON	
1.1/2" X 1/2"	50 X 1/2"	21 X 4	84	106.00
1.1/2" X 3/4"	50 X 3/4"	21 X 4	84	125.00
1.1/2" X 1"	50 X 1"	21 X 4	84	148.00
2" X 1/2"	63 X 1/2"	-	54	130.00
2" X 3/4"	63 X 3/4"	-	54	149.00
2" X 1"	63 X 1"	-	54	168.00
2.1/2" X 1/2"	75 X 1/2"	-	42	130.00
2.1/2" X 3/4"	75 X 3/4"	-	42	152.00
2.1/2" X 1"	75 X 1"	-	42	172.00
3" X 1/2"	90 X 1/2"	12 X 3	36	151.00
3" X 3/4"	90 X 3/4"	12 X 3	36	168.00
3" X 1"	90 X 1"	12 X 3	36	187.00
4" X 1/2"	110 X 1/2"	-	30	196.00
4" X 3/4"	110 X 3/4"	-	30	218.00
4" X 1"	110 X 1"	-	30	224.00
5" X 1/2"	140 X 1/2"	-	22	253.00
5" X 3/4"	140 X 3/4"	-	22	270.00
5" X 1"	140 X 1"	-	22	290.00
6" X 1/2"	160 X 1/2"	-	17	270.00
6" X 3/4"	160 X 3/4"	-	17	288.00
6" X 1"	160 X 1"	-	17	316.00



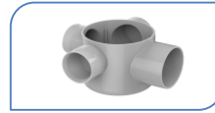
NAHNI TRAP SOLID				
INCH	MM	BAG	CARTOON	RATE
4" x 2"	110 x 63	-	65	145.00
4" x 2.1/2"	110 x 75	-	55	160.00
4" x 3"	110 x 90	-	45	190.00
4" x 4"	110 x 110	-	40	210.00



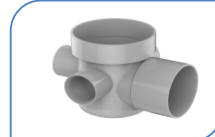
VENT COWL				
INCH	MM	BAG	CARTOON	RATE
2"	63	-	72	20.00
2.1/2"	75	-	120	29.50
3"	90	-	63	37.00
4"	110	-	120	52.00



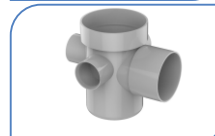
REDUCER TEE 10 kg/cm <sup>2</sup>				
SIZE		PACKING		RATE
INCH	MM	BAG	CARTOON	
3/4" x 1/2"	25 x 20	-	-	20.00
1" x 1/2"	32 x 20	17 x 4	68	28.00
1" x 3/4"	32 x 25	17 x 4	68	30.00



MULTI FLOOR TRAP (4" INCH)				
INCH	MM	BAG	CARTOON	RATE
4" x 2.1/2"	110 X 75	-	50	210.00



MULTI FLOOR TRAP (5" INCH)				
INCH	MM	BAG	CARTOON	RATE
4" x 2.1/2"	110 X 75	-	40	250.00
4" x 3"	110 X 90	-	36	260.00



MULTI FLOOR TRAP (7" INCH)				
INCH	MM	BAG	CARTOON	RATE
4" x 2.1/2"	110 X 75	-	30	300.00
4" x 3"	110 X 90	-	28	320.00



REDUCER TEE 06 kg/cm <sup>2</sup>				
SIZE		PACKING		RATE
INCH	MM	BAG	CARTOON	
1.1/4" x 3/4"	40 x 25	20 x 4	80	43.00
1.1/4" x 1"	40 x 32	20 x 4	80	44.00
1.1/2" x 3/4"	50 x 25	11 x 4	44	69.00
1.1/2" x 1"	50 x 32	11 x 4	44	70.00
1.1/2" x 1.1/4"	50 x 40	10 x 4	40	71.00
2" x 1"	63 x 32	9 x 3	27	100.00
2" x 1.1/4"	63 x 40	8 x 3	24	103.00
2" x 1.1/2"	63 x 50	8 x 3	24	106.00
2.1/2" x 1.1/2"	75 x 50	-	-	-
2.1/2" x 2"	75 x 63	-	-	-
3" x 2"	90 x 63	-	-	-
3" x 2.1/2"	90 x 75	-	-	-
4" x 2.1/2"	110 x 75	-	-	-
4" x 3"	110 x 90	-	-	-



P-TRAP				
INCH	MM	BAG	CARTOON	RATE
4" x 4"	110 X 110	-	18	375.00
5" x 4"	125 X 110	-	18	395.00



Q-TRAP				
INCH	MM	BAG	CARTOON	RATE
4" x 4"	110 X 110	-	17	415.00
5" x 4"	125 X 110	-	17	440.00



S-TRAP				
INCH	MM	BAG	CARTOON	RATE
4" x 4"	110 X 110	-	15	480.00
5" x 4"	125 X 110	-	15	505.00



THREAD ELBOW 16 kg/cm <sup>2</sup>				
SIZE		PACKING		RATE
INCH	MM	BAG	CARTOON	
1/2"	20 x 1/2"	22 x 8	176	20.00
3/4"	25 x 3/4"			
1"	32 x 1"			
3/4" X 1/2"	25 x 1/2"	15 x 8	120	25.00
1" X 1/2"	32 x 1/2"	10 x 8	80	34.60



THREAD TEE 16 kg/cm <sup>2</sup>				
SIZE		PACKING		RATE
INCH	MM	BAG	CARTOON	
1/2"	20 x 1/2"	15 x 8	120	25.00
3/4"	25 x 3/4"			
1"	32 x 1"			
3/4" X 1/2"	25 x 1/2"	10 x 8	80	34.00
1" X 1/2"	32 x 1/2"	6 x 8	48	47.00



MALE SET 06 kg/cm <sup>2</sup>				
SIZE		PACKING		RATE
INCH	MM	BAG	CARTOON	
2.1/2"	75			
3"	90			
4"	110			
5"	140			
6"	160			



AIR MALE SET 06 kg/cm <sup>2</sup>				
SIZE		PACKING		RATE
INCH	MM	BAG	CARTOON	
2.1/2"	75			
3"	90			
4"	110			
5"	140			
6"	160			



BALL VALVE PLAIN 16 kg/cm <sup>2</sup>				
INCH	MM	BAG	CARTOON	RATE
1/2"	20	17 x 6	102	31.00
3/4"	25	11 x 6	66	41.00
1"	32	9 x 6	54	51.00
1.1/4"	40	6 x 6	36	86.00
1.1/2"	50	4 x 6	24	103.00
2"	63	2 x 6	12	150.00
2.1/2"	75	-	9	210.00
3"	90	-	6	310.00
4"	110	-	6	575.00
5"	140	-	4	1900.00
6"	160	-	2	2200.00



BALL VALVE THREAD 16 kg/cm <sup>2</sup>				
INCH	MM	BAG	CARTOON	RATE
1/2"	20	17 x 6	102	32.00
3/4"	25	11 x 6	66	42.00
1"	32	9 x 6	54	53.00
1.1/4"	40	6 x 6	36	89.00
1.1/2"	50	4 x 6	24	106.00
2"	63	2 x 6	12	154.00
2.1/2"	75	-	9	215.00
3"	90	-	6	315.00
4"	110	-	6	582.00
5"	140	-	4	1910.00
6"	160	-	2	2210.00

# VIGOR<sup>®</sup>

Complete Plumbing Solution



## P.T.M.T

Taps With Flange Polytetra Methylene Terephthalate

### Product Features



HIGH STRENGTH & DURABILITY



RESIDENTIAL PURPOSES



IDEAL FOR DRINKING WATER



Rust Free



Long Life Durability



SS Insert For High Strength



Water Saving Technology



Food Grade & Hygienic



Scratch Resistant



Safe Against Theft



Advance  
Technology



Skilled  
Manpower



Excellent  
Quality Standard



Unmatched  
Designs



Integrity



Unbelievable  
Customer Service

### Angle Cock



Qty : 48 | MRP. : 200.00

### Bib Cock



Qty : 36 | MRP. : 205.00

### Long Cock



Qty : 24 | MRP. : 235.00

### Pillar Cock



Qty : 24 | MRP. : 265.00

### Sink Cock



Qty : 10 | MRP. : 520.00

### Swan Cock



Qty : 10 | MRP. : 520.00

### 2 in 1 Bib Cock



Qty : 8 | MRP. : 470.00

### 2 Way Angle Cock



Qty : 16 | MRP. : 450.00



Advance  
Technology



Skilled  
Manpower



Excellent  
Quality Standard



Unmatched  
Designs

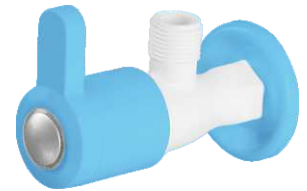


Integrity



Unbelievable  
Customer Service

## Angle Cock



Qty : 48 | MRP. : 200.00

## Bib Cock



Qty : 36 | MRP. : 205.00

## Long Cock



Qty : 24 | MRP. : 235.00

## Pillar Cock



Qty : 24 | MRP. : 265.00

## Sink Cock



Qty : 10 | MRP. : 520.00

## Swan Cock



Qty : 10 | MRP. : 520.00

## 2 in 1 Bib Cock



Qty : 8 | MRP. : 470.00

## 2 Way Angle Cock



Qty : 16 | MRP. : 450.00

## Wall Mixer



Qty : 4 | MRP. : 2400.00



Advance Technology



Skilled Manpower



Excellent Quality Standard



Unmatched Designs

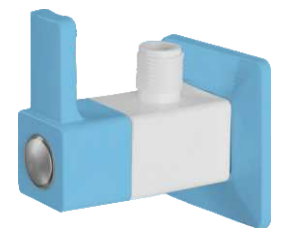


Integrity



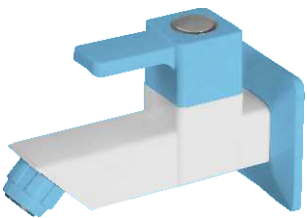
Unbelievable Customer Service

## Angle Cock



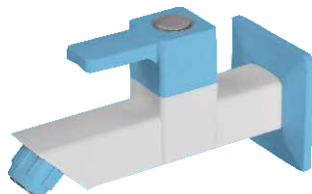
Qty : 48 | MRP. : 340.00

## Bib Cock



Qty : 24 | MRP. : 370.00

## Long Cock



Qty : 24 | MRP. : 420.00

## Pillar Cock



Qty : 10 | MRP. : 480.00

## Sink Cock



Qty : 10 | MRP. : 810.00

## Swan Cock



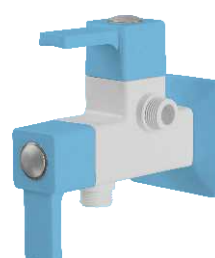
Qty : 10 | MRP. : 810.00

## 2 in 1 Bib Cock



Qty : 8 | MRP. : 750.00

## 2 Way Angle Cock



Qty : 16 | MRP. : 720.00

## Wall Mixer



Qty : 4 | MRP. : 2700.00



Advance Technology



Skilled Manpower



Excellent Quality Standard



Unmatched Designs

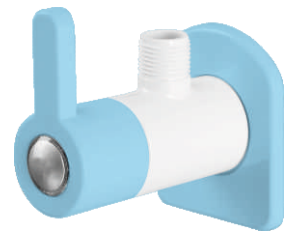


Integrity



Unbelievable Customer Service

### Angle Cock



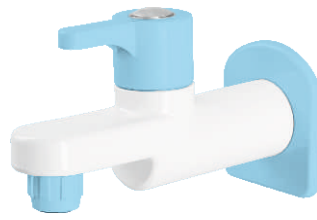
Qty : 48 | MRP. : 360.00

### Bib Cock



Qty : 24 | MRP. : 430.00

### Long Cock



Qty : 24 | MRP. : 490.00

### Pillar Cock



Qty : 10 | MRP. : 520.00

### Sink Cock



Qty : 10 | MRP. : 820.00

### Swan Cock



Qty : 10 | MRP. : 820.00

### 2 in 1 Bib Cock



Qty : 8 | MRP. : 800.00

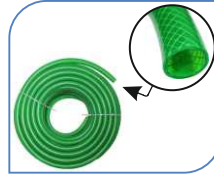
**P.T.M.T Products**  
with High Functionality & Technology



SOLVENT CEMENT				
ML	BOX	CARTOON	RATE	RETAIL MRP
10 ML Tube	50 x 4	200	15.40	35.00
25 ML Tube	30 x 4	120	28.40	55.00
50 ML Tube	28 x 3	84	39.60	60.00
100 ML Tin	15 x 6	90	77.00	110.00
250 ML Tin	12 x 4	48	138.00	180.00
500 ML Tin	-	12	255.00	300.00



PETROL PIPE				
INCH	MM	METERS	AVG.WEIGHT	RATE
3/4"	20	30	5.250	1270.00
1"	25	30	7.800	1890.00
1.1/4"	32	30	12.000	2890.00



BRAIDED PIPE				
INCH	MM	METERS	AVG.WEIGHT	RATE
3/4"	20	30	5.600	1410.00
1"	25	30	8.350	2100.00
1.1/4"	32	30	13.500	3400.00

## NOTE

### Terms & Conditions

Prices are Ex-factory | GST Applicable at Actuals | Freight is Extra as Actual Kindly Check the Discount Structure Before Placing Orders Every Time. No Responsibility for any Breakage, Damage or Loss in Transit. Company Holds the Right to Revise the Prices Prior any Information. Goods one Sold are not Taken Back Unless there is any Quality Issue. All Disputes are Subjected to the Jurisdiction of Factory Location Only.

**NOTE: WARRANTY IS APPLICABLE FOR USING VIGOR PIPES WITH VIGOR FITTINGS & VIGOR SOLVENT.**





**OFFICE ADDRESS** (Communication Address)

Plot No. 447, G.I.D.C., Phase-2, Vishal Chowk, Dared,  
Jamnagar - 361004 (Gujarat), India

**VIGOR PLAST INDIA PVT. LTD.**

Survey No.640/3, Behind Gujarat Gas CNG Pump, Godown Zone,  
Lalpur road, Dared, Vill. Chela, Jamnagar - 361006 (Gujarat) India

**VIGOR POLYTECH** (Unit of Vigor Plast India Pvt. Ltd.)

Plot No. 447, G.I.D.C., Phase-2, Vishal Chowk, Dared,  
Jamnagar - 361004 (Gujarat), India

EMAIL : [vigorfittings@gmail.com](mailto:vigorfittings@gmail.com)

Download



**Vigor Catalogue**  
on the App Store



[WWW.VIGORPLASTINDIA.COM](http://WWW.VIGORPLASTINDIA.COM)



We Support  
MAKE IN INDIA



एक कदम स्वच्छता की ओर